



# **User Manual**

Version 1.0.0.0

**Yeastar Technology Co., Ltd.**

---

## Table of Contents

<b>1 Introduction</b> .....	<b>3</b>
<b>2 Installing MySMS Software</b> .....	<b>4</b>
<b>3 Managing MySMS</b> .....	<b>9</b>
3.1 Accessing MySMS .....	9
3.2 Multi-User Accounts .....	10
3.3 Managing MySMS .....	10
3.3.1 Manager Login .....	10
3.3.2 Device Manage .....	10
3.3.3 User Manage .....	13
3.3.4 System Logs .....	15
3.3.5 Password Settings .....	16
<b>4 Using MySMS</b> .....	<b>17</b>
4.1 User Login .....	17
4.2 SIM Card Status .....	17
4.3 Contacts Management .....	18
4.3.1 Contact List .....	18
4.3.2 Contact Group .....	20
4.4 Send SMS .....	22
4.4.1 Send Personalized SMS .....	22
4.4.2 Send Fixed SMS .....	25
4.4.3 Send Scheduled SMS .....	28
4.4.4 Send Template SMS .....	31
4.5 Outbox .....	34
4.6 Inbox .....	35
4.7 System Logs .....	36
4.8 Password Settings .....	36

## 1 Introduction

The potential of interacting people with SMS is huge. Positioned to respond to this trend, MySMS enables users of NeoGate TG VoIP GSM Gateway to send SMS on the free Web messaging platform. Without any complex integration, any Web browser could be exploited to take advantage of Web SMS sending and receiving. Secure, reliable, and fast SMS delivery ensures enterprises have the best SMS solution.

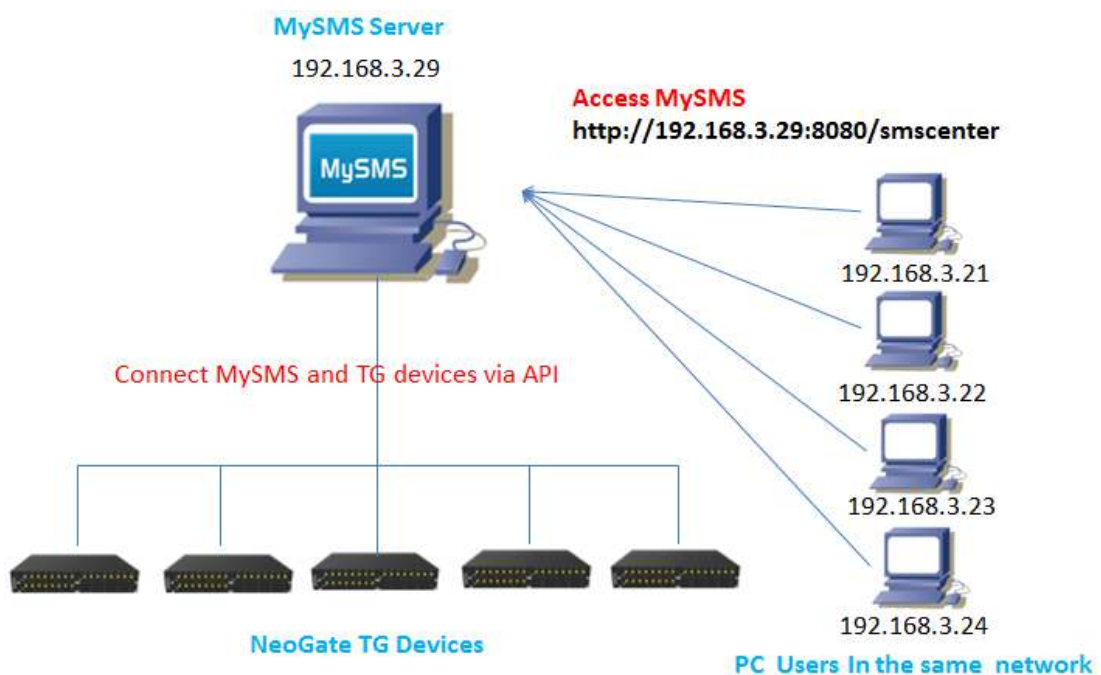


Figure 1-1 MySMS Application

### **Features**

- 2-way SMS
- Inbox & Outbox
- Bulk SMS
- Scheduled SMS sending
- SMS Delivery Result
- SMS Template
- Custom SMS
- Fixed SMS
- Contact Management
- SIM Card Status
- Admin and User Account
- System Logs

## 2 Installing MySMS Software

MySMS is built on Tomcat and MySQL. The port used for Tomcat is 8080 and 3306 for MySQL. Please check if these two ports are used for other procedures before installing MySMS. If the ports are already being used, please close the related programs and then start to install MySMS.

It is easy to get start with MySMS. All you need to do is downloading MySMS software to one computer and access MySMS using a browser. Before installing the software, please make sure that your computer meets the following requirements.

**Operating System:** Windows XP, Windows 7, Windows 8

**Disk Space:** 400MB of free space is required

**Web Browser:** Firefox, Chrome, IE (Version 9 or higher)

### Follow these step-by-step instructions to install MySMS

**Step1.** Go to Yeastar website to download MySMS installation file.

Click the link to download:

<http://www.yeastar.com/download/MySMS/setup.exe>

**Step2.** Save MySMS installation file and double click it to install MySMS on your computer.

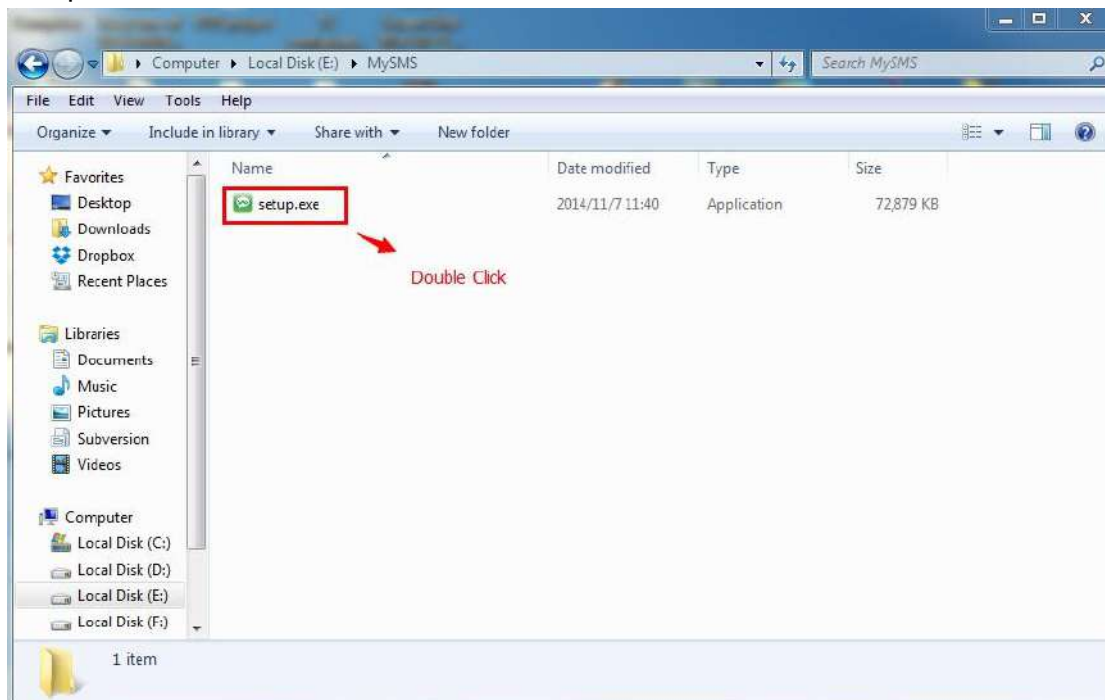


Figure 2-1 Install MySMS

**Step3.** Select the language, and click **OK**.

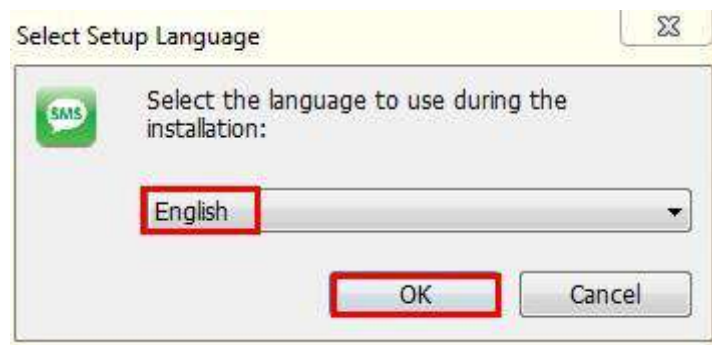


Figure 2-2 Select the Language

**Step4.** Click **Next** to continue to install MySMS.

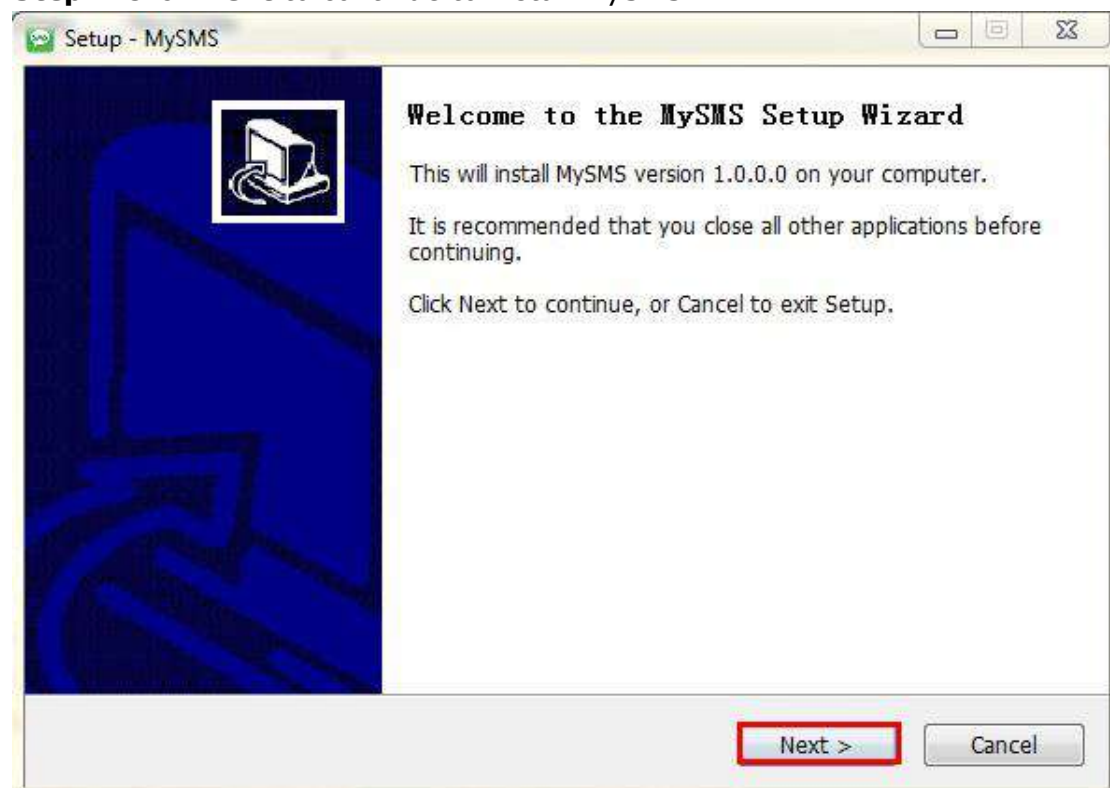


Figure 2-3 MyPBX Setup Wizard

**Step5.** Select the destination where you want to install MySMS, then click **Next**.

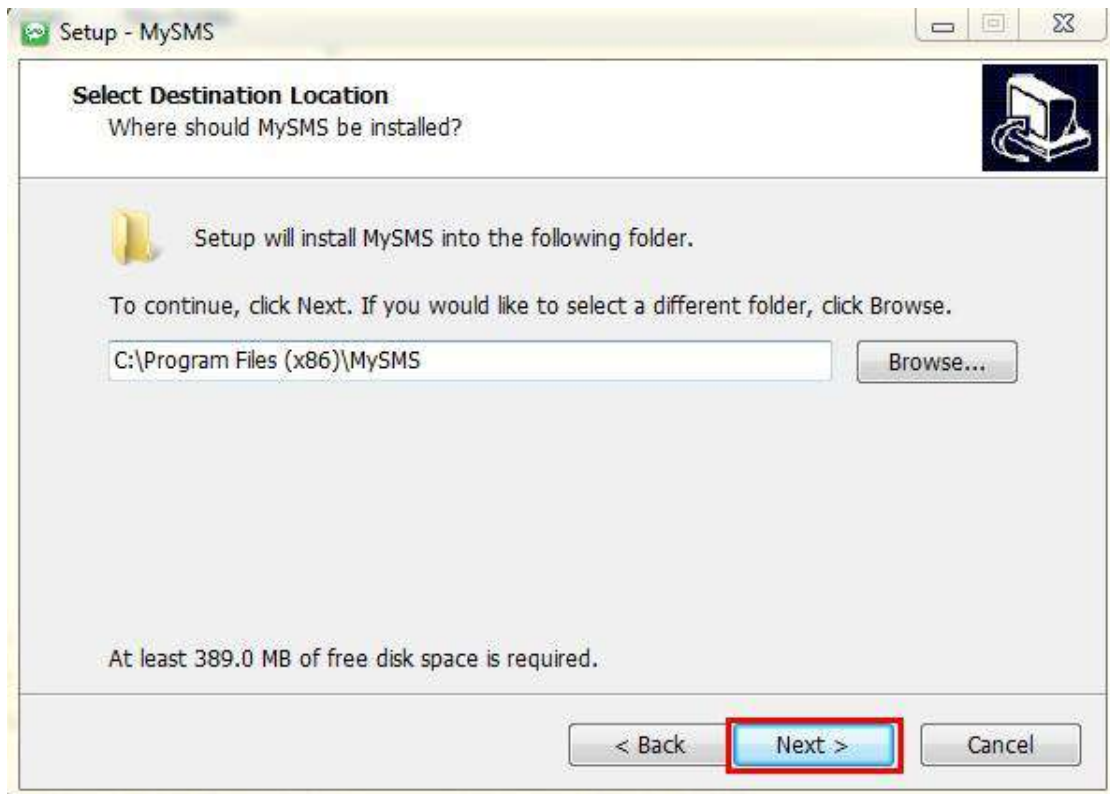


Figure 2-4 Select Destination Location

**Step6.** Select Start Menu Folder, then click **Next**.

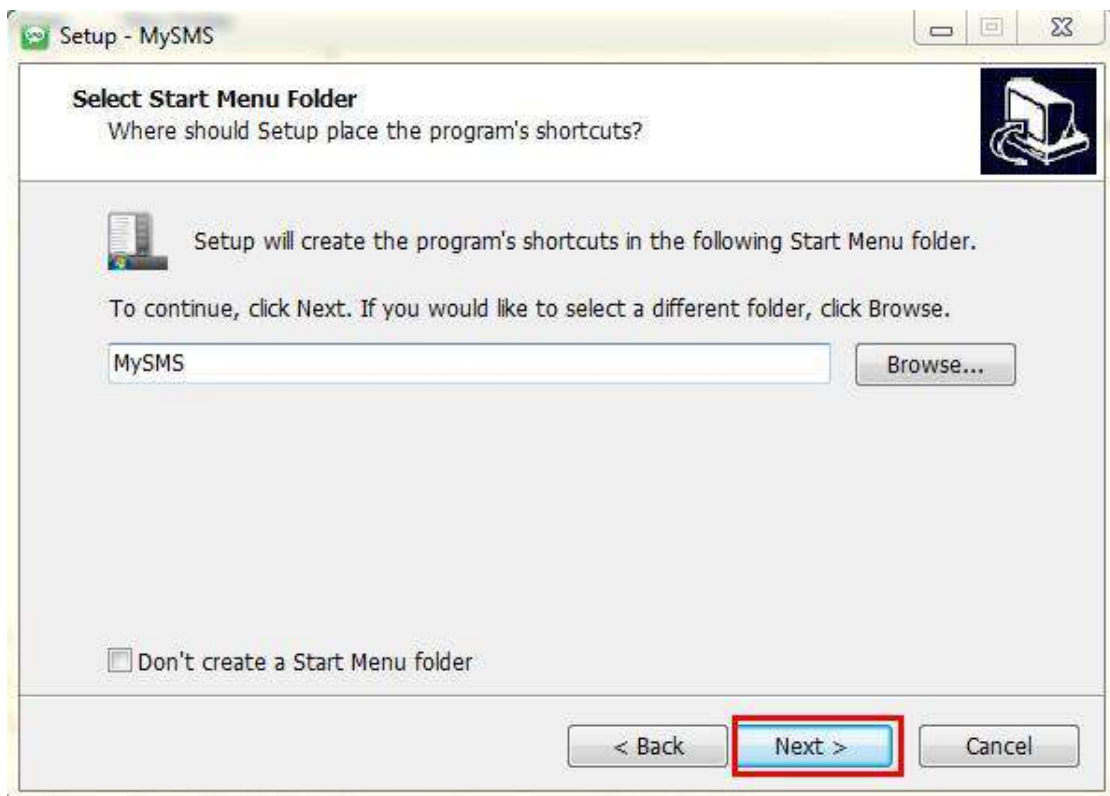


Figure 2-5 Select Start Menu Folder

**Step7.** Select Additional Tasks, then click **Next**.

If you don't want to create a Quick Launch icon, uncheck the **Create a Quick Launch icon** box before you click **Next**.

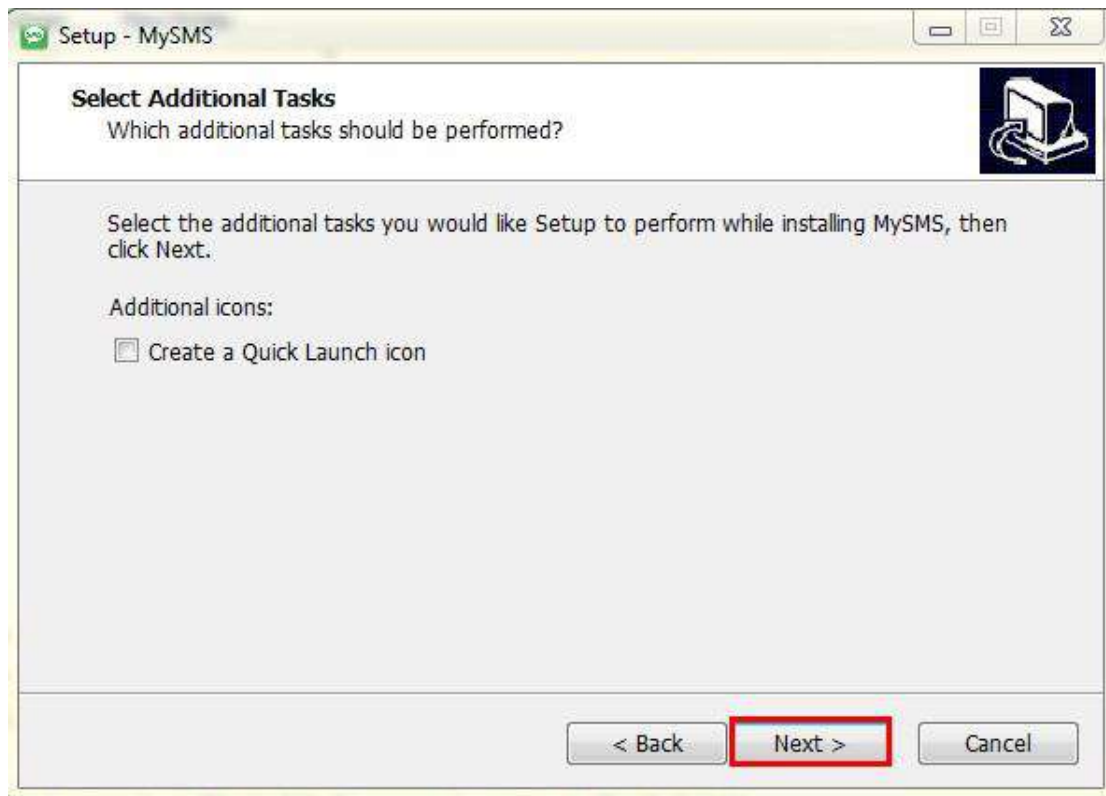


Figure 2-6 Select Additional Tasks

**Step8.** Click **Install** to continue with the installation.

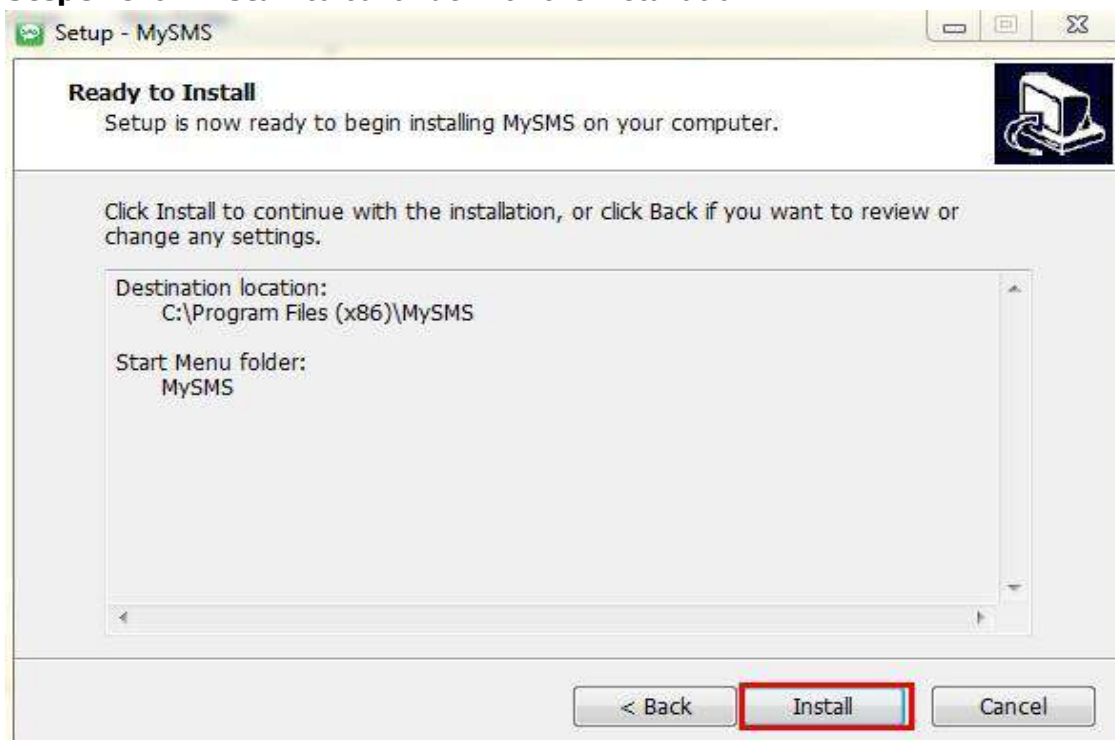


Figure 2-7 Ready to Install

**Step9.** Please wait while Setup installs MySMS on your computer.

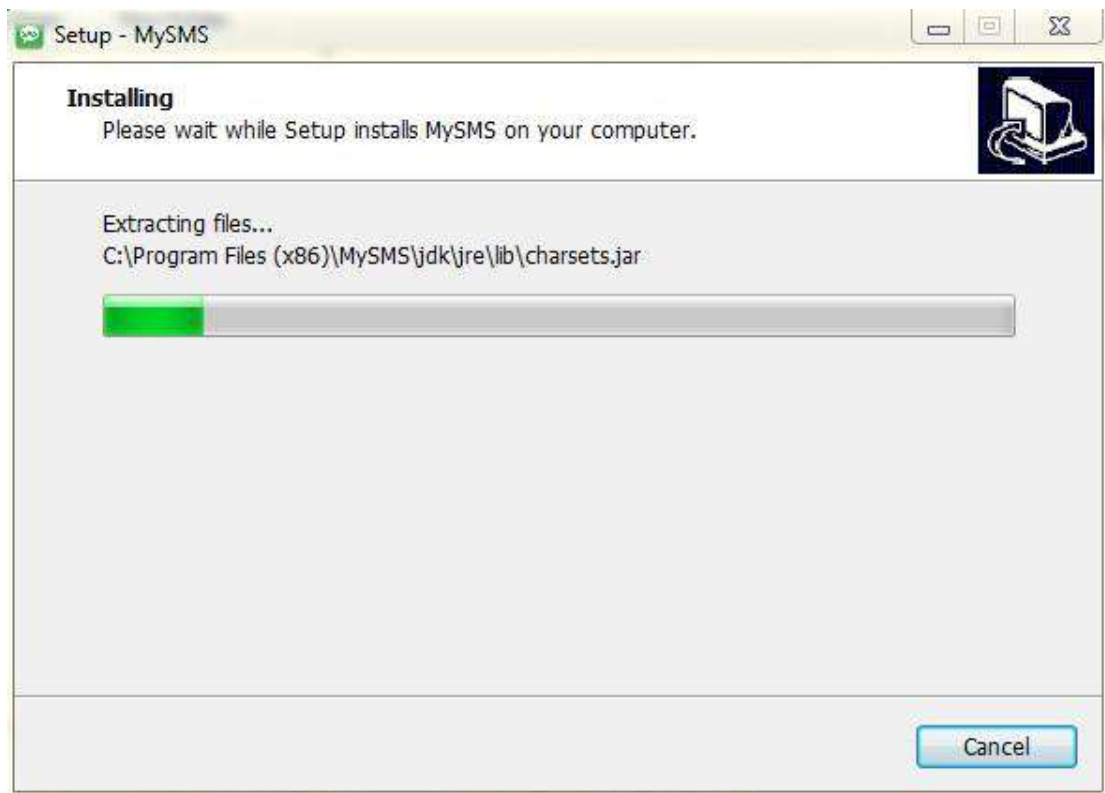


Figure 2-8 Installing

**Step10.** The installation is done. Click **Finish** to exit Setup.

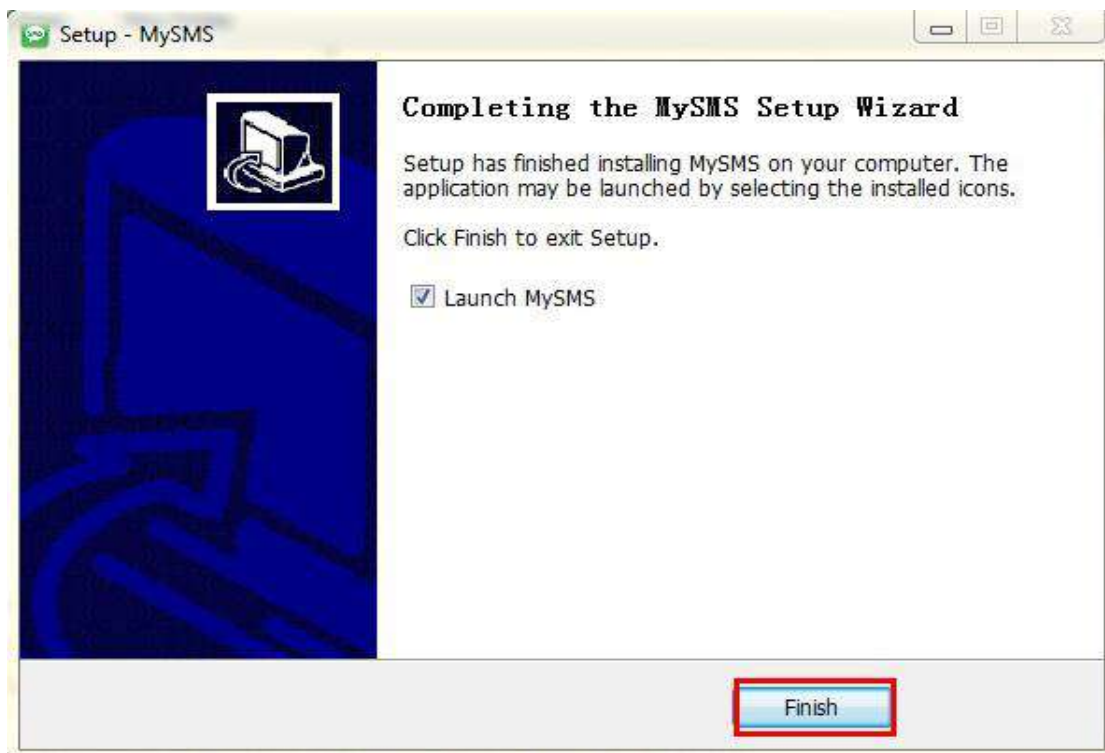


Figure 2-9 Finish

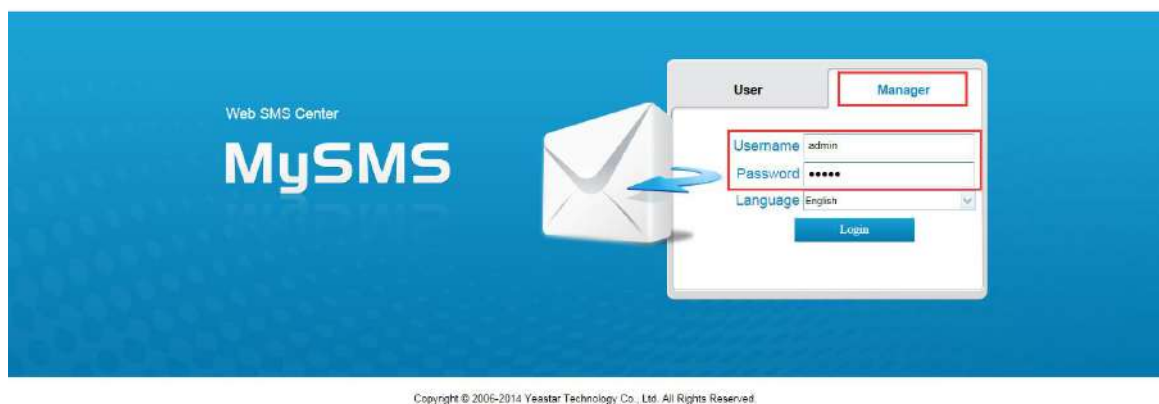


## 3 Managing MySMS

### 3.1 Accessing MySMS

Once the installation is done, MySMS will automatically start on the local server, bringing you to the MySMS local website using the default web browser.

The MySMS local host is <http://localhost:8080/smscenter>.



Copyright © 2006-2014 Yeastar Technology Co., Ltd. All Rights Reserved.

Figure 3-1 MySMS Local Host

You can use another MySMS URL to access MySMS:

<http://the local server IP address:8080/smscenter>

In this guide, the local IP address is 192.168.3.29, so you need to point the browser to the URL: <http://192.168.3.29:8080/smscenter>.

This URL can be applied to other computers in the same local network to access MySMS.



Copyright © 2006-2014 Yeastar Technology Co., Ltd. All Rights Reserved.

Figure 3-2 MySMS URL

**Note:**

You **MUST** keep the PC (where MySMS software is installed) running, or you cannot access MySMS.

## 3.2 Multi-User Accounts

As you can see on the MySMS logon page, there are two user types.

- **User** allows a user to send SMS messages and check the received SMS messages with a selected NeoGate TG device.
- **Manager** allows the administrator to manage the integration between MySMS and NeoGate TG devices, manage user sub-accounts and view system logs.

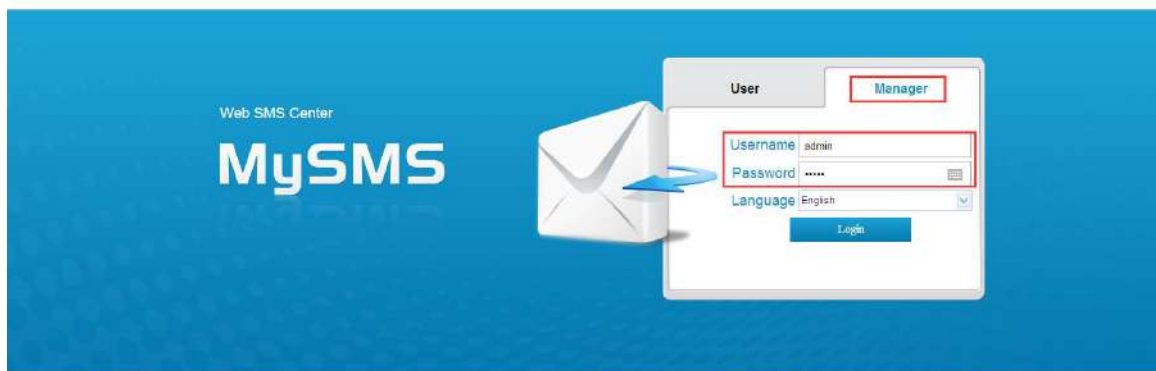
## 3.3 Managing MySMS

### 3.3.1 Manager Login

To use MySMS, you should first log in MySMS Manager Account to manage devices and users.

**Username:** admin

**Password:** admin (default)



Copyright © 2006-2014 Yeastar Technology Co., Ltd. All Rights Reserved.

Figure 3-3 Manager Login

### 3.3.2 Device Manage

On this page, you can add devices to connect with MySMS software via API. In this guide, we show you how to integrate one NeoGate TG1600 device to MySMS.

NeoGate TG1600 IP address: 192.168.3.184.

**Important:**

Before connecting NeoGate TG1600 device to MySMS, please make sure that the API Settings on NeoGate TG1600 Web Interface are configured correctly.

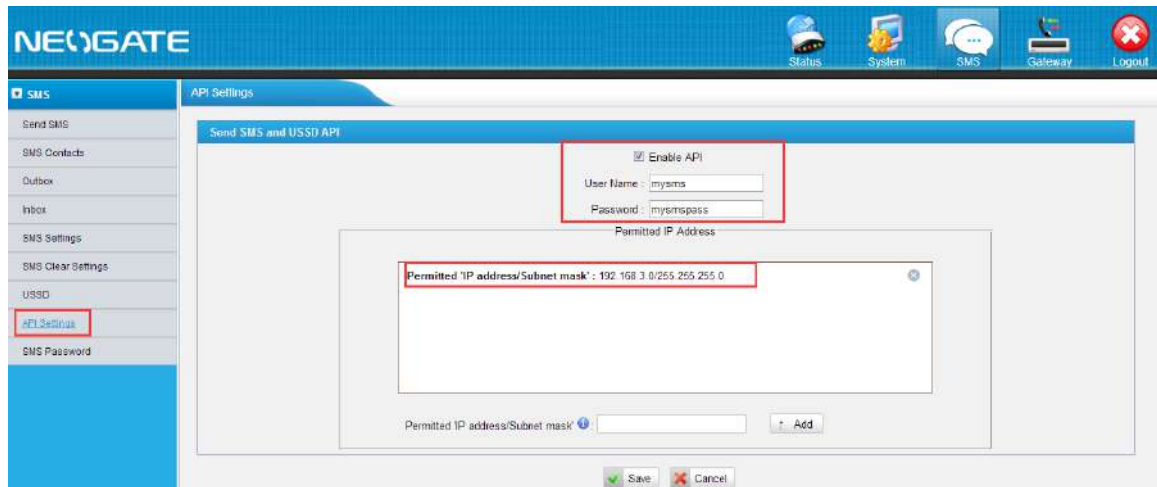



Figure 3-4 NeoGate TG API Settings

**Enable API:** Checked //Enable API, the default API port is 5038  
**User Name:** mysms // Enter the user name according to your preference  
**Password:** mysmpass //Enter the password according to your preference  
**Permitted 'IP address/Subnet mask':** 192.168.3.0/255.255.255.0  
 // Only the input IP address range can connect this device via API

## Add Device

1. Click the button  to connect one device to MySMS.
2. In the popup window, fill in the details of NeoGate TG1600.

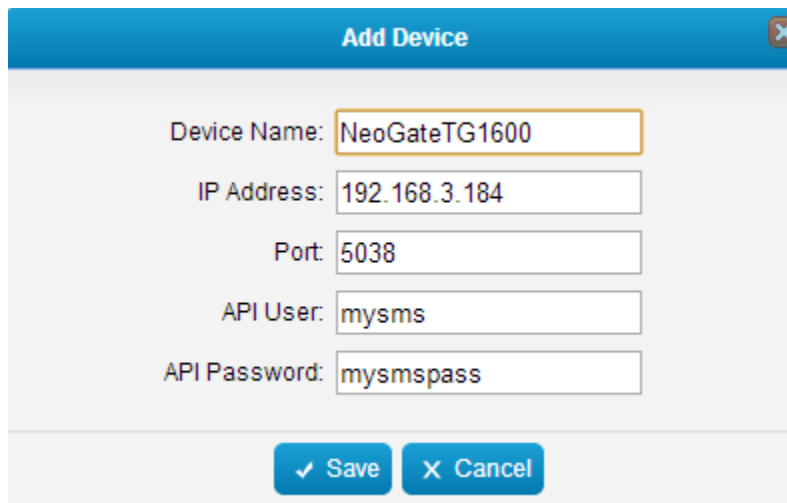


Figure 3-5 Add Device

- Device Name:** NeoGateTG1600 //Give a name for the device which you want to connect with MySMS
- IP Address:** 192.168.3.184 //The IP address of the NeoGate TG1600
- Port:** 5038 //The API port, the default is 5038
- API User:** mysms // The User Name set on NeoGate TG1600 API Settings page
- API Password:** mysmpass //The password set on NeoGate TG1600 API Settings page

3. Click the button  and check the Connect state.

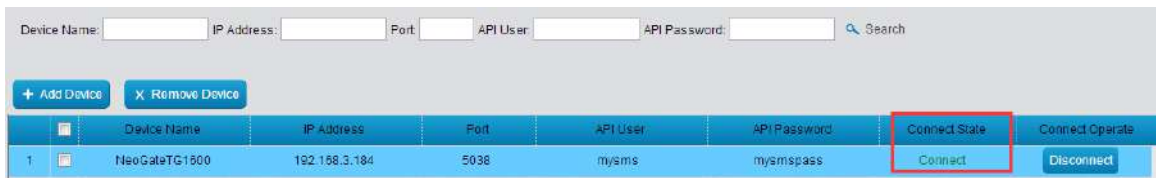


Figure 3-6 Device Status

### Connect State

**Connect:** the device and MySMS are connected successfully.

**Disconnect:** the device is not connected to MySMS.

### Remove Device


- Select devices, and click the button  to remove the devices from MySMS.
- Click **OK** to remove devices; click **Cancel** to keep the devices.



Figure 3-7 Remove Device

### Connect / Disconnect

- Click  to disconnect TG1600 and MySMS.

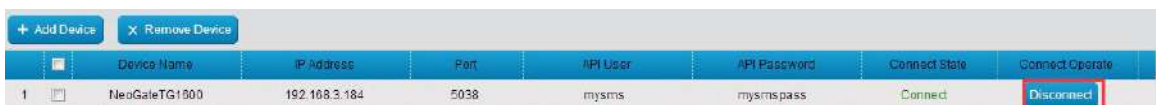


Figure 3-8 Disconnect Device

- Click  to connect TG1600 and MySMS.

+ Add Device		X Remove Device							
	Device Name	IP Address	Port	API User	API Password	Connect State	Connect Operate		
1	NeoGateTG1600	192.168.3.184	5038	mysms	mysmpass	Disconnected	Connect		

Figure 3-9 Connect Device

## Search Device

If there are many devices added on MySMS, you can find the desired device quickly with the search function on MySMS.

The device can be searched by "Device Name", "IP Address", "Port", "API User", and "API Password".

Device Name:	<input type="text"/>	IP Address:	<input type="text"/>	Port:	<input type="text"/>	API User:	<input type="text"/>	API Password:	<input type="text"/>	<input type="button" value="Search"/>
--------------	----------------------	-------------	----------------------	-------	----------------------	-----------	----------------------	---------------	----------------------	---------------------------------------

Figure 3-10 Search Device

### 3.3.3 User Manage

#### Add User

1. Click **+ Add User** to add one user.
2. Set the User Name and password.

**Add User**
✕

**Username:**

**Password:**

Figure 3-11 Add User

3. Click **Save** to save the settings, then you will see the password is protected as it cannot be seen after created.

	Username	Password	Created Time	User Authority
1	Catherine	b5a92fd1f4ea95c0ba543e3053b17fdab	2014-11-07 21:22:58	

Figure 3-12 User Status

## User Authority

A user can use MySMS with multiple NeoGate TG devices if the devices are added on MySMS.

1. Click  to configure the user authority.

	Username	Password	Created Time	User Authority
1	Catherine	b5a92fd1f4ea95c0ba543e3053b17fdab	2014-11-07 21:22:58	
2	Ada	7a6c874f39b4241f8e7c91fd2559b3f	2014-11-07 21:33:21	

Figure 3-13 Edit User

2. Choose which devices can be used by the user, then click **Save**.

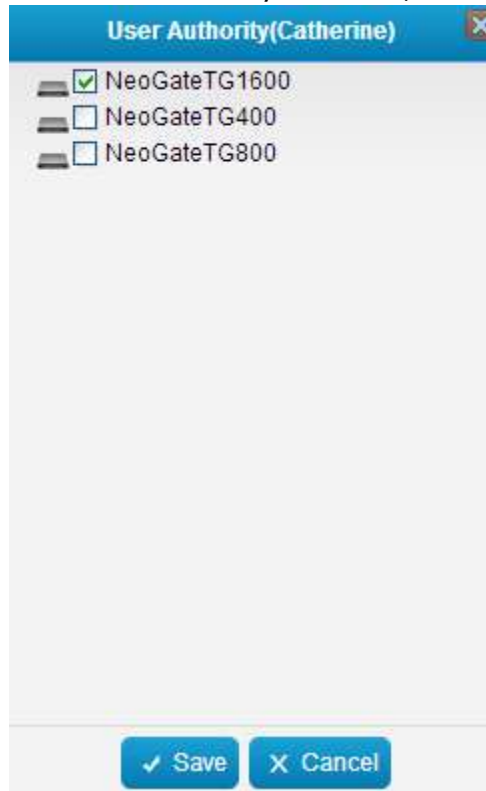



Figure 3-14 User Authority

## Remove User

1. Select the desired users, and click the button  to remove the users from MySMS.
2. Click **OK** to remove the users; click **Cancel** to keep the users.

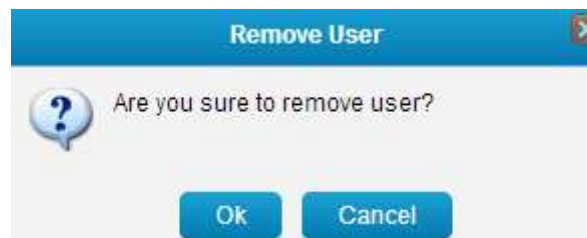


Figure 3-15 Remove User

## Initial Password

If the password for a user is forgotten, it can be reset to "123456".


1. Select the user, and click  to reset the password.
2. The system will ask if you are sure that you want to use the initial password.



Figure 3-16 Initial Password

3. Click **OK** to use the initial password "123456".



Figure 3-17 Initial Password Successfully

4. Click **Cancel** to keep the old password.

## Search Users

If there are many users added on MySMS, you can find the desired user quickly with the search function on MySMS.

The user can be searched by "Username" and "Created Time".

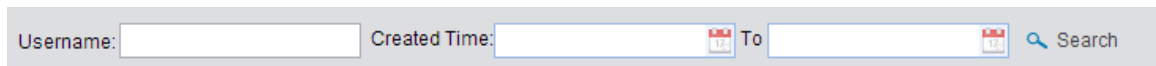


Figure 3-18 Search Users

### 3.3.4 System Logs

The system logs can be viewed and searched by the administrator on this page.



 A table showing system logs with columns for Log Type, Time, IP Address, and User. The table contains 12 rows of log entries.
 

	Log Type	Time	IP Address	User
1	Modify Authority	2014-11-07 22:03:10	127.0.0.1	admin
2	Add Device	2014-11-07 21:55:24	127.0.0.1	admin
3	Add Device	2014-11-07 21:55:51	127.0.0.1	admin
4	Login	2014-11-07 21:55:32	127.0.0.1	admin
5	Add User	2014-11-07 21:33:21	127.0.0.1	admin
6	Add User	2014-11-07 21:22:56	127.0.0.1	admin
7	Login	2014-11-07 21:01:17	127.0.0.1	admin
8	Edit Device	2014-11-07 20:23:48	127.0.0.1	admin
9	Add Device	2014-11-07 20:22:48	127.0.0.1	admin
10	Login	2014-11-07 20:22:24	127.0.0.1	admin
11	Login	2014-11-07 16:31:00	192.168.10.42	admin
12	Login	2014-11-07 16:12:42	192.168.10.42	admin

Figure 3-19 System Logs

### 3.3.5 Password Settings



Click  to change the password of admin account.

Enter the old password and set a new password, click **Save**, then log in admin account using new password.

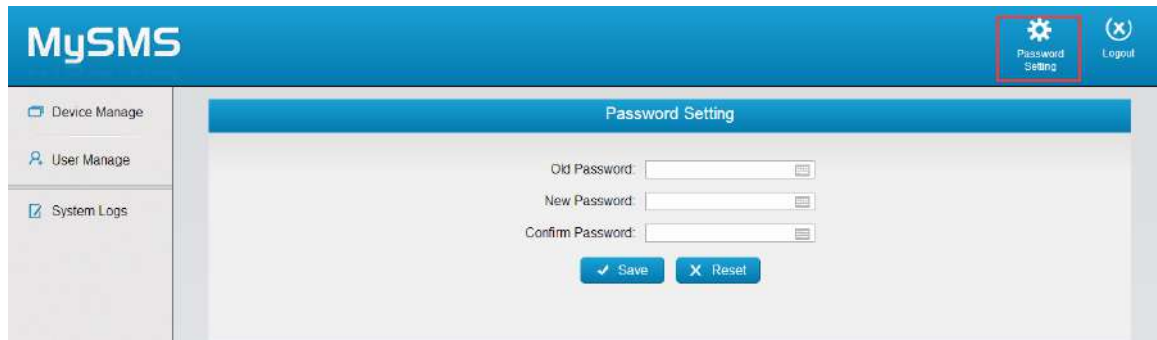


Figure 3-20 Password Settings



## 4 Using MySMS

### 4.1 User Login

To use MySMS, you need to log in MySMS with the user account, which is created by the admin account. Here we use the account "Catherine", which was created in the [Chapter 3.3.2 User Manage](#).



Copyright © 2006-2014 Yeostar Technology Co., Ltd. All Rights Reserved.

Figure 4-1 User Login

**Device:** Select the device "NeoGateTG1600", which is authorized to user "Catherine"

**Username:** Catherine

**Password:** catherine1600

After login, you can use MySMS to send SMS messages through the NeoGate TG1600 and check the received SMS messages on MySMS.

### 4.2 SIM Card Status

Before using MySMS to send and receive SMS messages, you need to check which SIM cards are available. You can view the status for all the SIM cards which are installed on NeoGate TG device. Click the **SIM Card Status** option on the left-hand navigation bar, you can see all the SIM cards' status listed on the page.



The screenshot shows the MySMS interface with a sidebar on the left containing navigation options: Inbox, Send SMS, Outbox, SMS Template, Fixed SMS, Contact List, Contact Group, SIM Card Status (highlighted), and System Logs. The main content area displays a table of SIM card status for 16 ports.

Port	State	Carrier	Signal
1	Ready	CHINA MOBILE	📶
2	Ready	CHINA MOBILE	📶
3	Ready	CHINA MOBILE	📶
4	Ready	CHINA MOBILE	📶
5	Ready	CHINA MOBILE	📶
6	Ready	CHINA MOBILE	📶
7	Failed		Please insert SIM Card
8	Failed		Please insert SIM Card
9	Failed		Please insert SIM Card
10	Failed		Please insert SIM Card
11	Failed		Please insert SIM Card
12	Failed		Please insert SIM Card
13	Detecting SIM...		📶
14	Ready	CHINA MOBILE	📶
15	Detecting SIM...		📶
16	Failed		📶

Figure 4-2 SIM Card Status

State	Description
Ready	The SIM card is idle
Failed	There is no SIM card inserted
Busy	The SIM card is being used

Signal	Description
📶	No signal
📶	Poor
📶	Average
📶	Good
📶	Excellent

## 4.3 Contacts Management

A contact list allows you to target and text contacts with common interests. Once you have all your contacts created on MySMS, you can send SMS messages to a single contact or a group or all contacts by directly selecting rather than typing in the numbers manually each time.

### 4.3.1 Contact List

Click the **Contact List** option on the left-hand navigation bar, you can manage the contacts on the page.

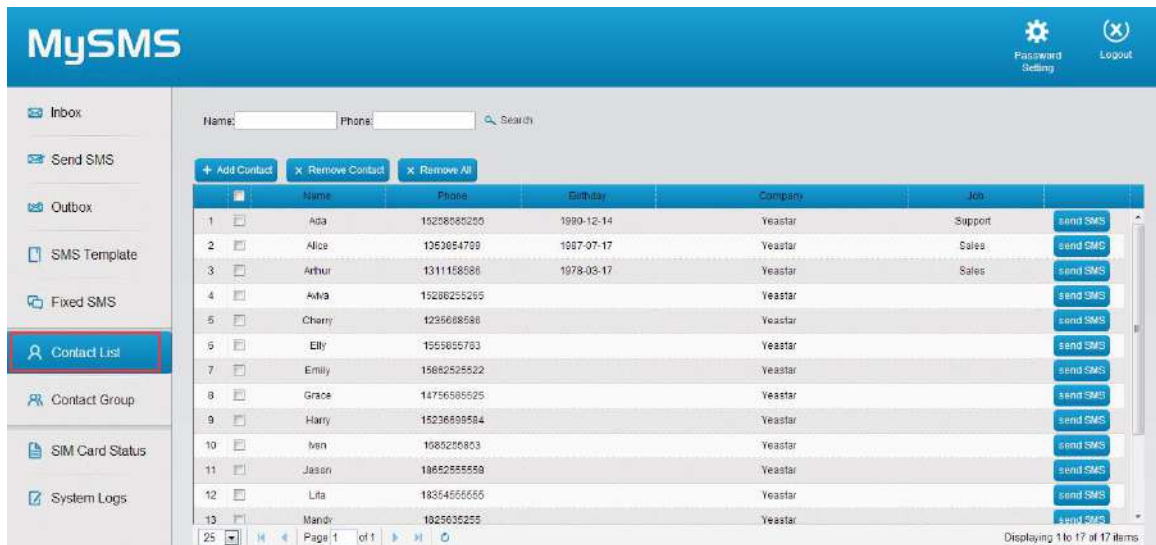


Figure 4-3 Contacts List

## Add Contact

1. Click **Add Contact** button to create an individual contact.
2. Enter the name, phone number and other information in the pop-up window.

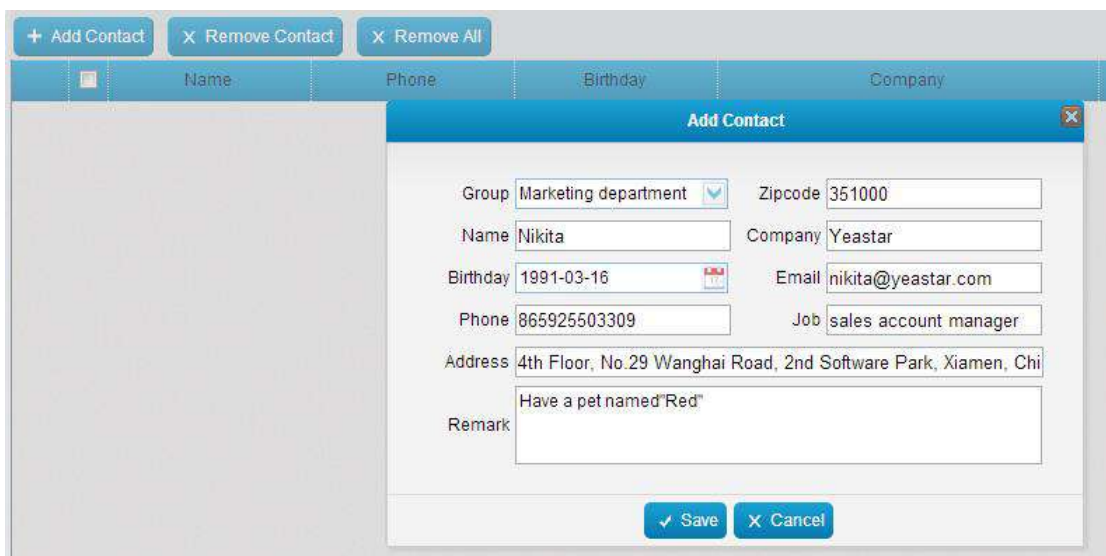


Figure 4-4 Add Contact

\*The **Name** and **Phone** fields are required.

3. Click **Save**, then the contact is successfully created.

## Remove Contact

1. Select the desired contacts and then click **Remove Contact**.
2. Click **OK** to remove the contacts.
3. Click **Cancel** to keep the contacts.

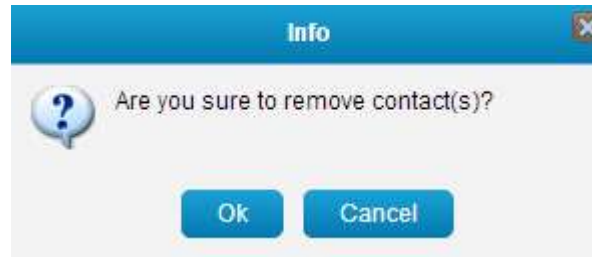


Figure 4-5 Remove Contacts

## Remove All

1. Click **Remove All**.
2. Click **Ok** to clear the contact list.
3. Click **Cancel** to keep all the contacts.

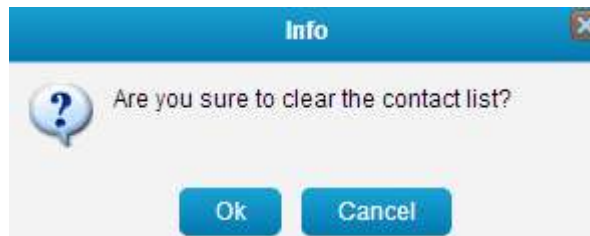


Figure 4-6 Remove All

## Search Contact

You can search the contact by "Name" and "Phone".

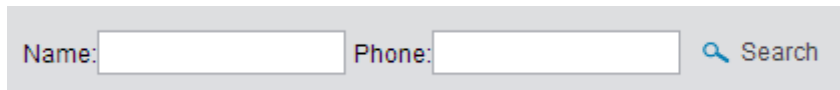
A search bar with a light gray background. It contains two input fields: 'Name:' followed by a text box, and 'Phone:' followed by a text box. To the right of the second text box is a magnifying glass icon and the word 'Search'.

Figure 4-7 Search Contact

### 4.3.2 Contact Group

Contacts created in the Contact List can be divided into groups. It makes sending SMS messages to multiple contacts more efficiently by focusing on one group at a time.

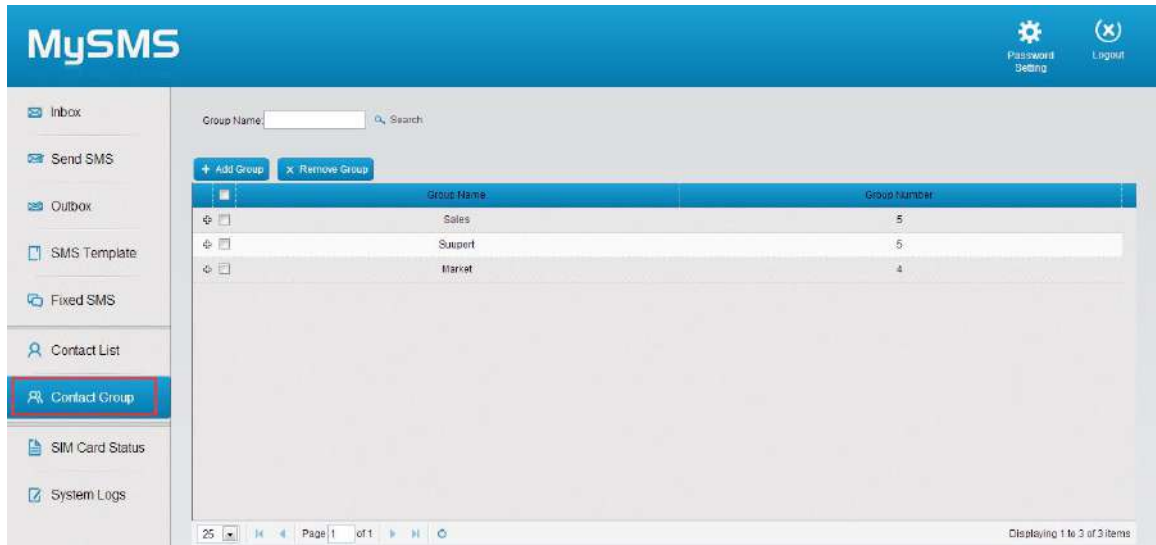


Figure 4-8 Contact Group

## Add Group

1. Click **Add Group** button to create a new group.
2. Enter the group name and select the desired contacts to the right box.

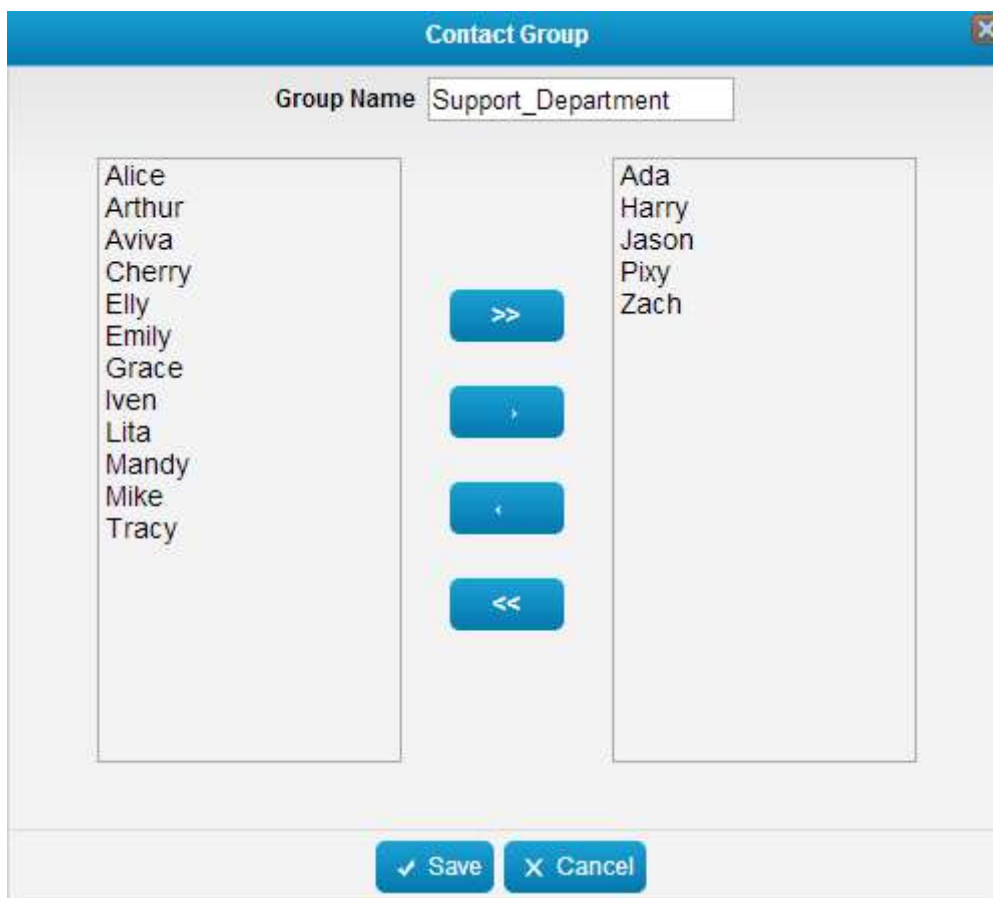


Figure 4-9 Add Contact Group

3. Click **Save** to save the contact group.

## Remove Group

1. Select the desired group and click **Remove Group**.
2. Click **Ok** to remove the group.
3. Click **Cancel** to keep the group.

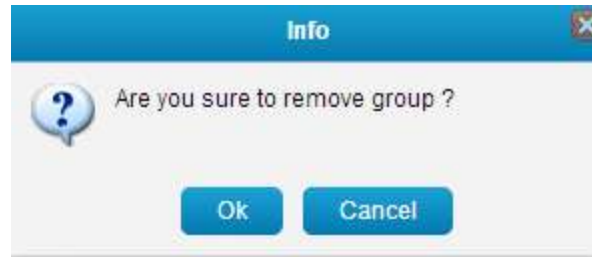


Figure 4-10 Remove Group

## Search Group

The contact groups can be searched by "Group Name".

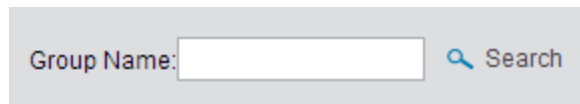


Figure 4-11 Search Group

## 4.4 Send SMS

### 4.4.1 Send Personalized SMS

In this section, we guide you how to send an SMS text message to the contacts by typing the message contents into MySMS.

**Step1.** Click the **Send SMS** option on the left-hand navigation bar, you will see the following screen.

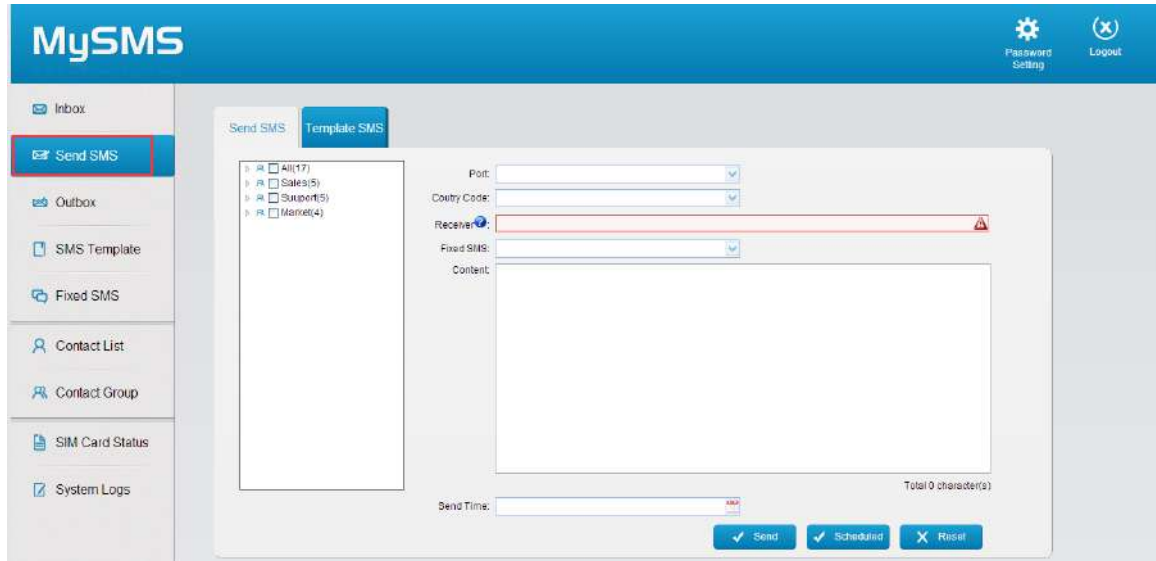


Figure 4-12 Send SMS

**Step2.** Select the available SIM card from the **Port** Field.

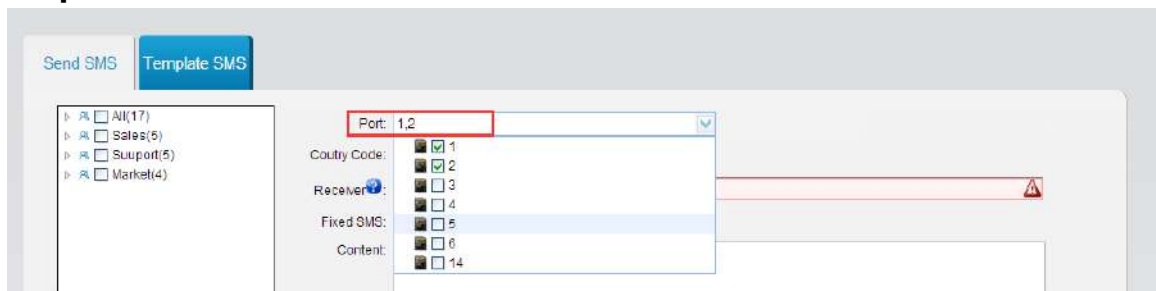


Figure 4-13 Select Port

**Step3.** Configure the **Country Code** according to your situation.

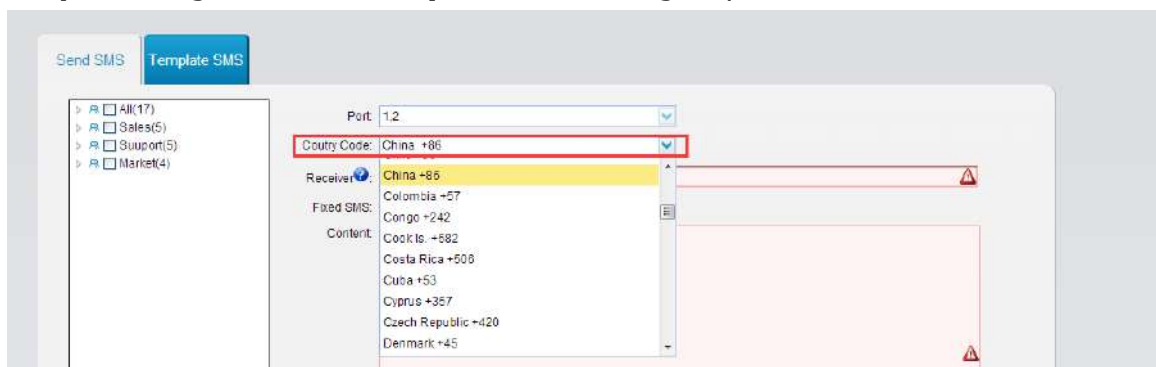
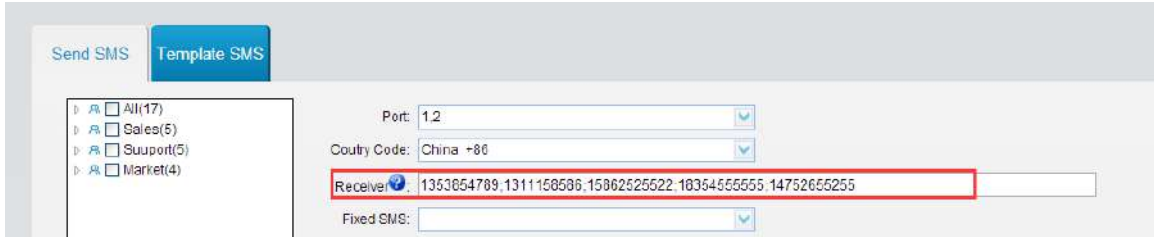


Figure 4-14 Country Code

**Step4.** Enter the intended receiver's mobile phone number in the **Receiver** field. You can enter multiple mobile phone numbers separated by semicolon.



Send SMS | Template SMS

Port: 1,2

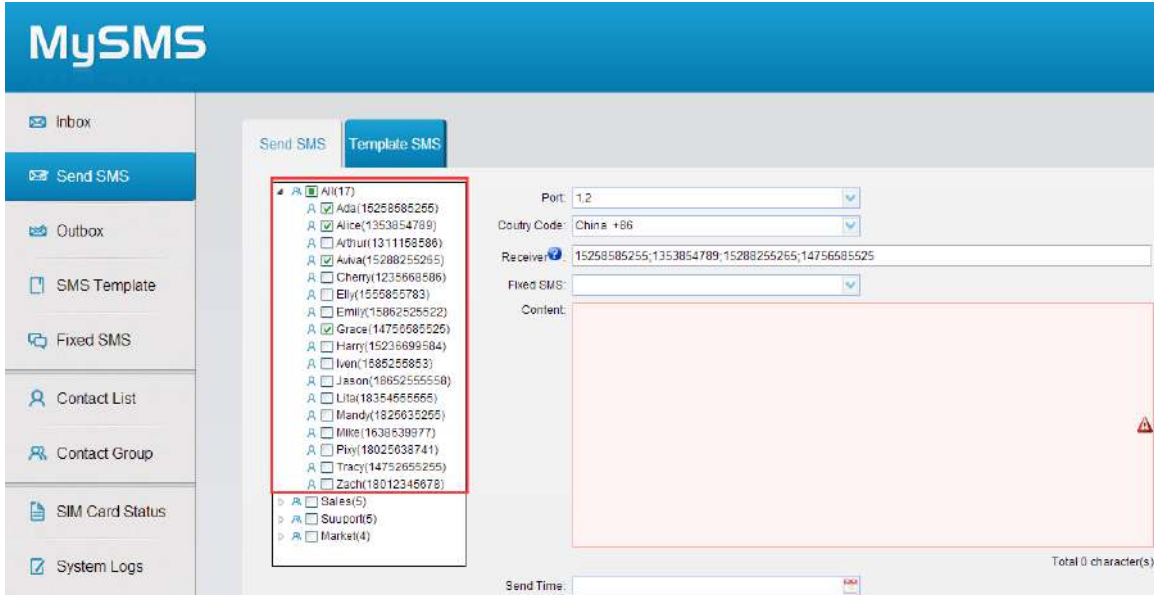
Country Code: China +86

Receiver: 1353854789,1311158586,1586252525,1835455555,14752655255

Fixed SMS:

Figure 4-15 Enter Phone Number

You can also pick the mobile numbers from the Contact list.



MySMS

Inbox

Send SMS | Outbox

SMS Template

Fixed SMS

Contact List

Contact Group

SIM Card Status

System Logs

Send SMS | Template SMS

Port: 1,2

Country Code: China +86

Receiver: 15258585255,1353854789,15288255255,14756585525

Fixed SMS:

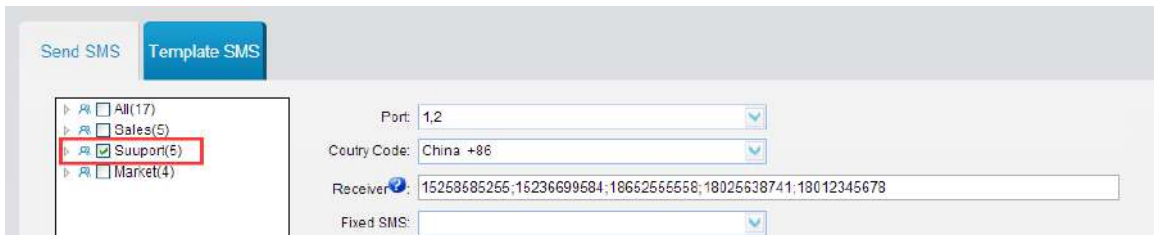
Content:

Send Time:

Total 0 character(s)

Figure 4-16 Select Contacts from Contact List

If you want to send the SMS message to a group, please select the desired group from the left box.



Send SMS | Template SMS

Port: 1,2

Country Code: China +86

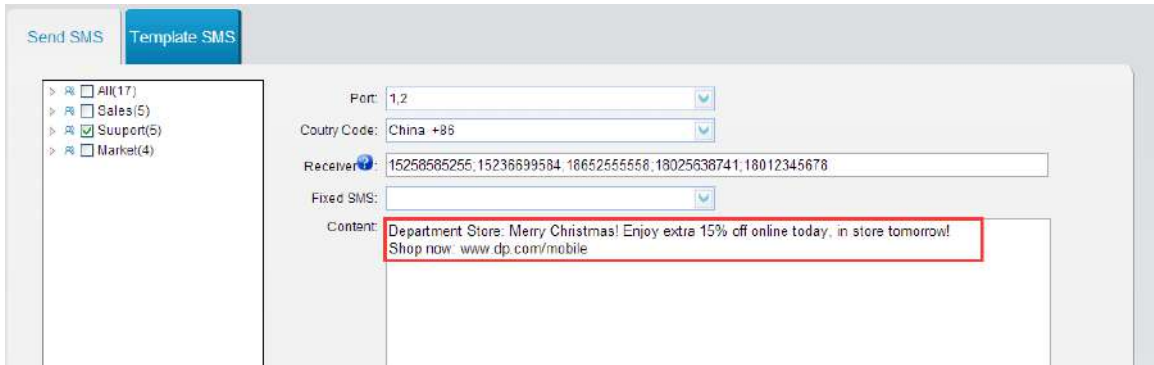
Receiver: 15258585255;15236699584;18652555558;18025638741;18012345678

Fixed SMS:

Figure 4-17 Select Contacts from Contact Group

**Step5.** Type the contents in the **Content** Field.





Send SMS | **Template SMS**

All(17)  
 Sales(5)  
 Support(5)  
 Market(4)

Port: 1,2

Country Code: China +86

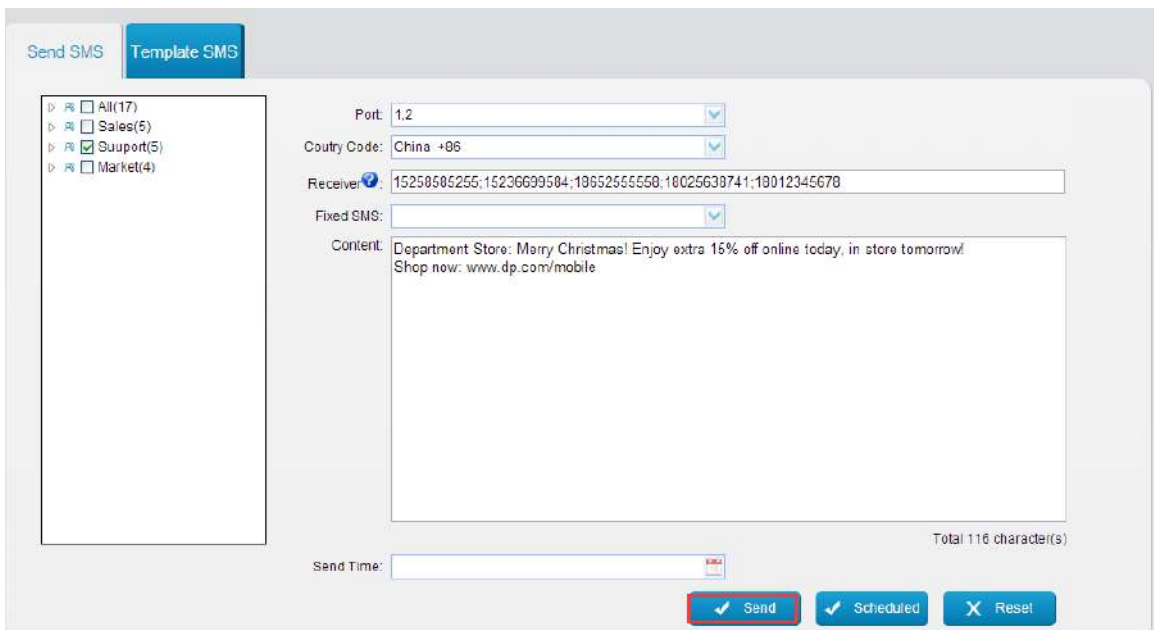
Receiver: 15258585255;15236699584;18652555558;18025638741;18012345678

Fixed SMS:

Content: Department Store: Merry Christmas! Enjoy extra 15% off online today, in store tomorrow! Shop now: www.dp.com/mobile

Figure 4-18 Type Contents

**Step6.** Click the **Send** button to send the composed message to the desired mobile numbers.



Send SMS | **Template SMS**

All(17)  
 Sales(5)  
 Support(5)  
 Market(4)

Port: 1,2

Country Code: China +86

Receiver: 15258585255;15236699584;18652555558;18025638741;18012345678

Fixed SMS:

Content: Department Store: Merry Christmas! Enjoy extra 15% off online today, in store tomorrow! Shop now: www.dp.com/mobile

Total 116 character(s)

Send Time:

Figure 4-19 Send SMS

#### 4.4.2 Send Fixed SMS

A Fixed SMS is a ready-made SMS message that is used to make sending text messages that have the same content easier. Usually, we create fixed SMS messages that are used frequently.

**Step1.** Click **Add SMS**.

**Step2.** Enter the contents, and Click **Save**.

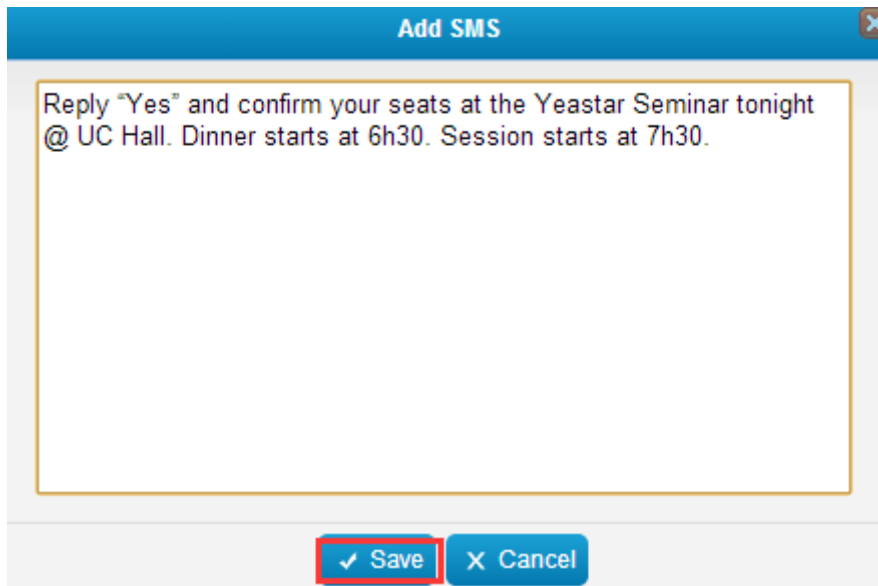


Figure 4-20 Add Fixed SMS

**Step3.** Click the **Send SMS** option on the left-hand navigation bar, you will see the following screen.

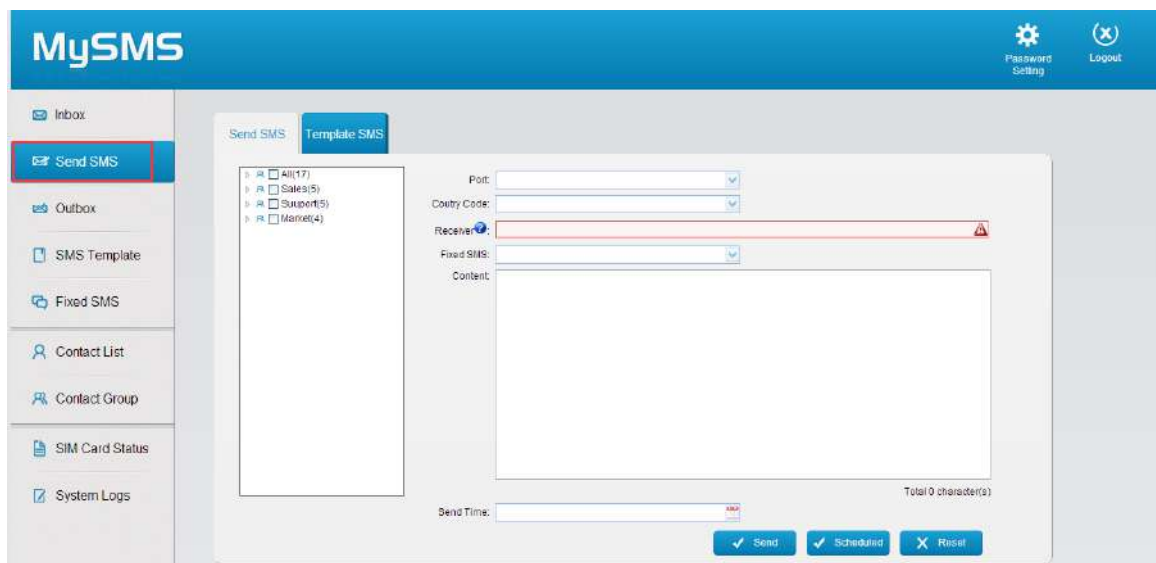


Figure 4-21 Send SMS

**Step4.** Select the available SIM card from the **Port** Field.

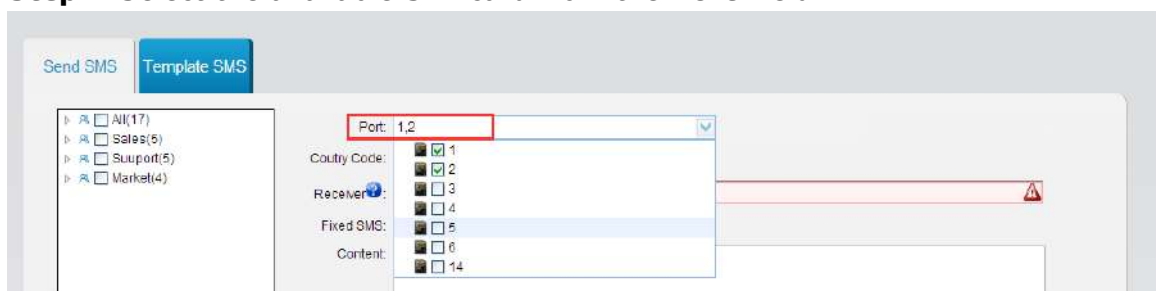


Figure 4-22 Select Port

**Step5.** Configure the **Country Code** according to your situation.

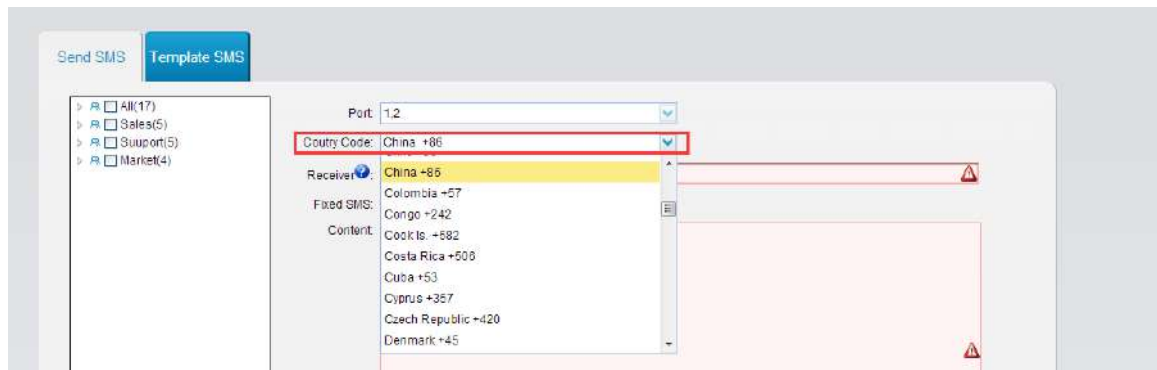


Figure 4-23 Country Code

**Step6.** Enter the intended receiver's mobile phone number in the **Receiver** field. You can enter multiple mobile phone numbers separated by semicolon.

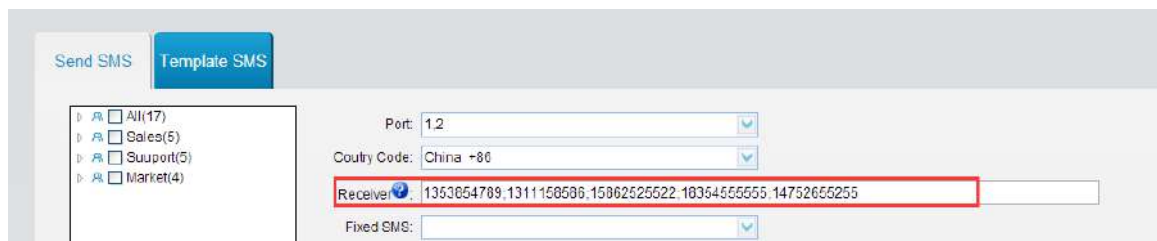


Figure 4-24 Enter Phone Number

You can also pick the mobile numbers from the Contact list.

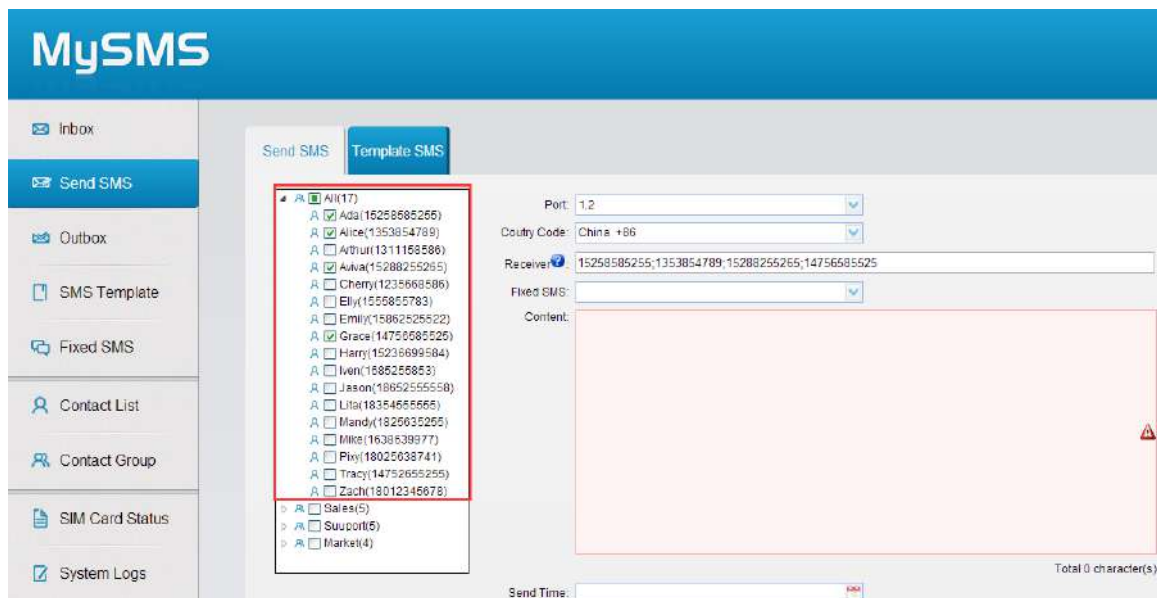
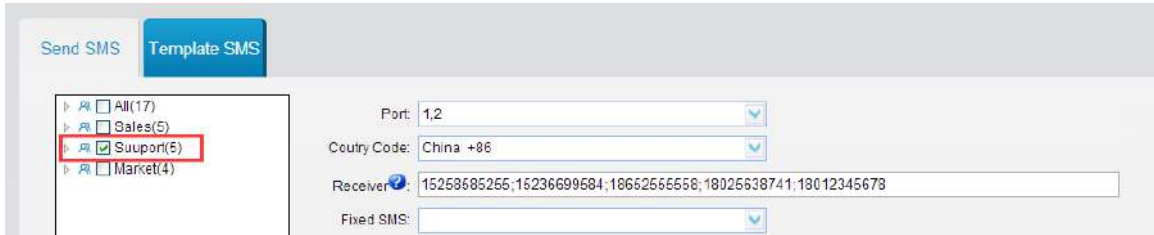


Figure 4-25 Select Contacts from Contact List

If you want to send the SMS message to a group, please select the desired group from the left box.



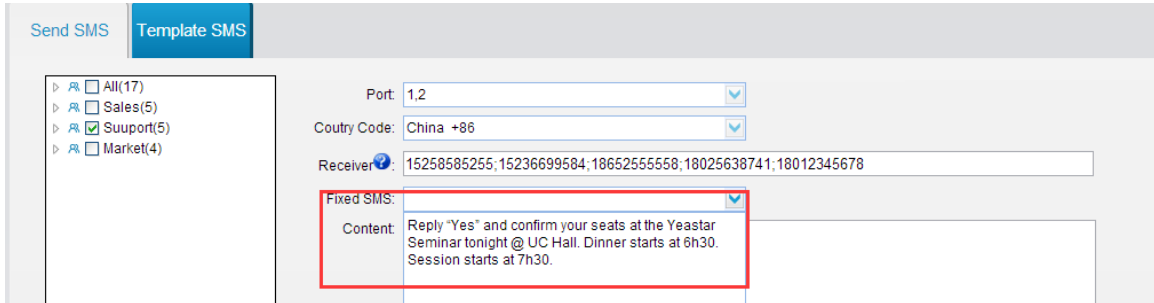
Send SMS | Template SMS

All(17)  
 Sales(5)  
 Suuport(5)  
 Market(4)

Port: 1,2  
 Coutry Code: China +86  
 Receiver: 15258585255;15236699584;18662555558;18025638741;18012345678  
 Fixed SMS:

Figure 4-26 Select Contacts from Contact Group

### Step7. Select the Fixed SMS.



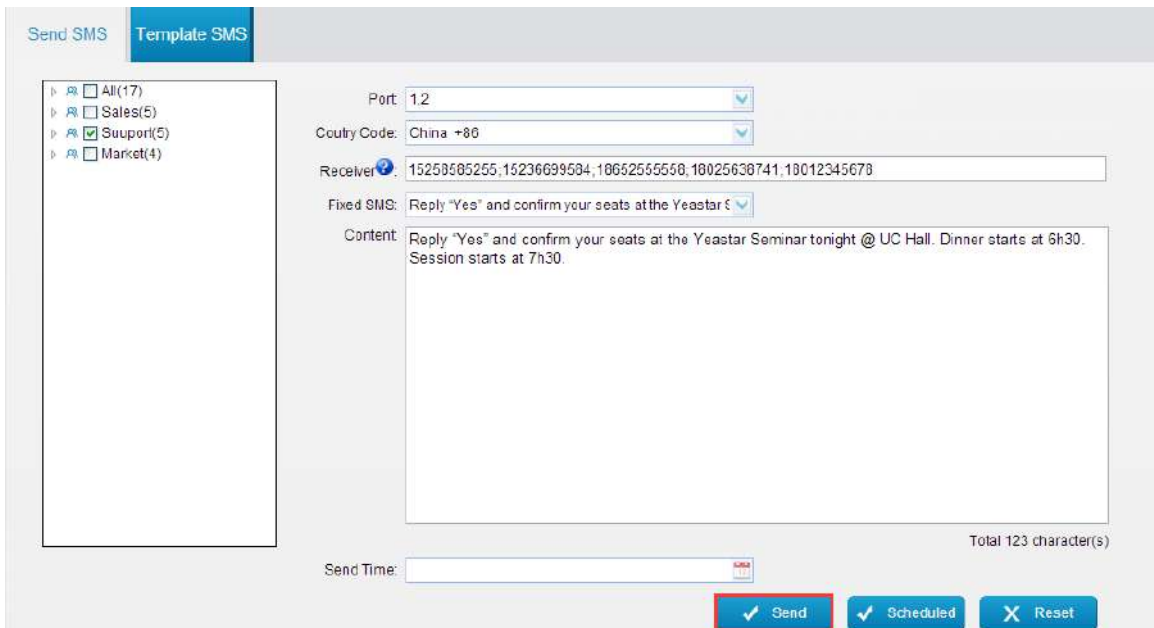
Send SMS | Template SMS

All(17)  
 Sales(5)  
 Suuport(5)  
 Market(4)

Port: 1,2  
 Coutry Code: China +86  
 Receiver: 15258585255;15236699584;18652555558;18025638741;18012345678  
 Fixed SMS: [Dropdown menu]  
 Content: Reply "Yes" and confirm your seats at the Yeostar Seminar tonight @ UC Hall. Dinner starts at 6h30. Session starts at 7h30.

Figure 4-27 Select a Fixed SMS

### Step6. Click the **Send** button to send the fixed SMS message to the desired mobile numbers.



Send SMS | Template SMS

All(17)  
 Sales(5)  
 Suuport(5)  
 Market(4)

Port: 1,2  
 Coutry Code: China +86  
 Receiver: 15258585255;15236699584;18652555558;18025638741;18012345678  
 Fixed SMS: Reply "Yes" and confirm your seats at the Yeostar  
 Content: Reply "Yes" and confirm your seats at the Yeostar Seminar tonight @ UC Hall. Dinner starts at 6h30. Session starts at 7h30.

Send Time: [Input field]

Total 123 character(s)

Figure 4-28 Send Fixed SMS

## 4.4.3 Send Scheduled SMS

**Step1.** Click the **Send SMS** option on the left-hand navigation bar, you will see the following screen.

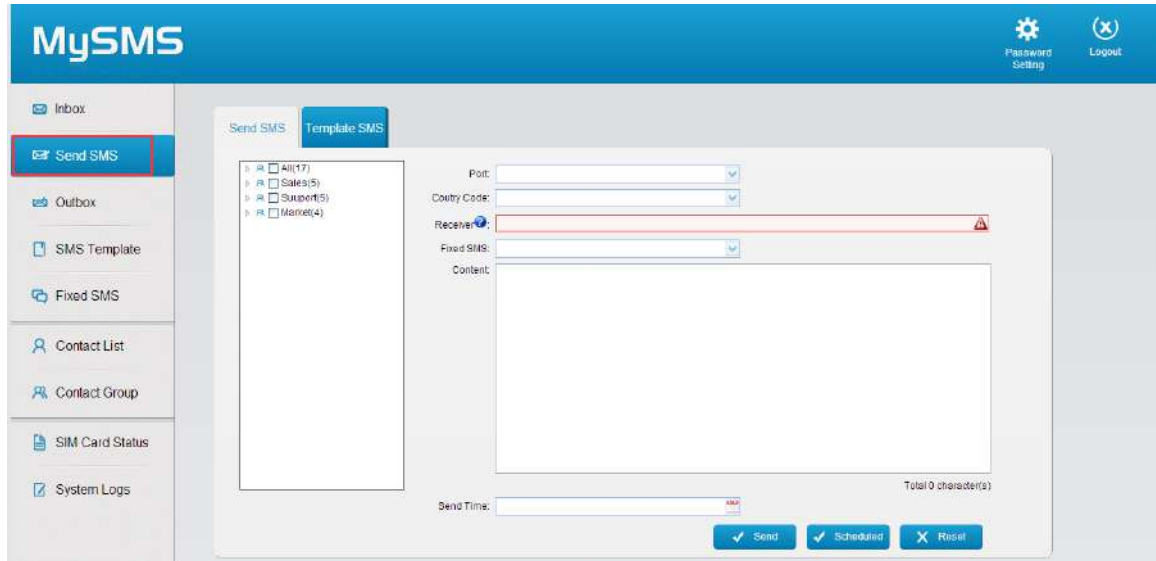


Figure 4-29 Send SMS

**Step2.** Select the available SIM card from the **Port** Field.

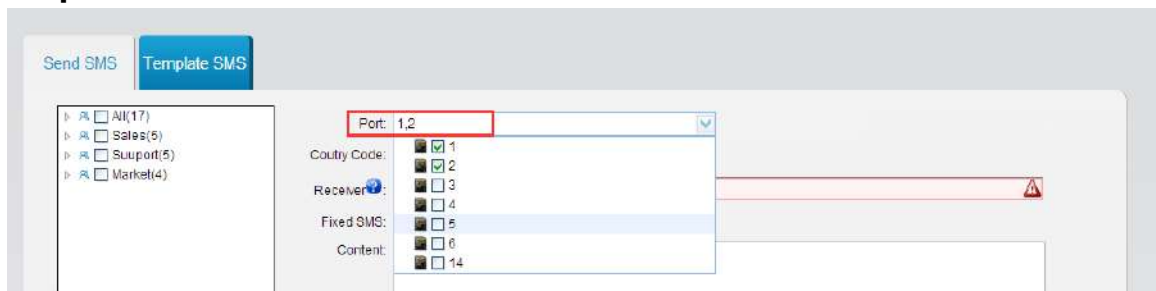


Figure 4-30 Select Port

**Step3.** Configure the **Country Code** according to your situation.

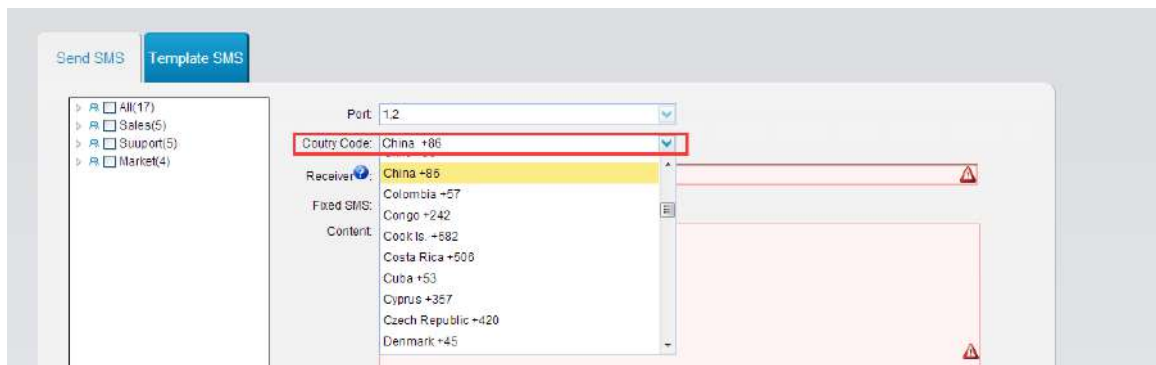
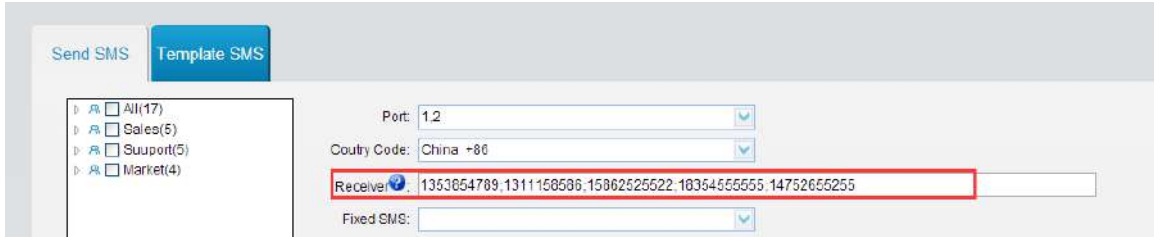


Figure 4-31 Country Code

**Step4.** Enter the intended receiver's mobile phone number in the **Receiver** field. You can enter multiple mobile phone numbers separated by semicolon.



Send SMS | Template SMS

Port: 1,2

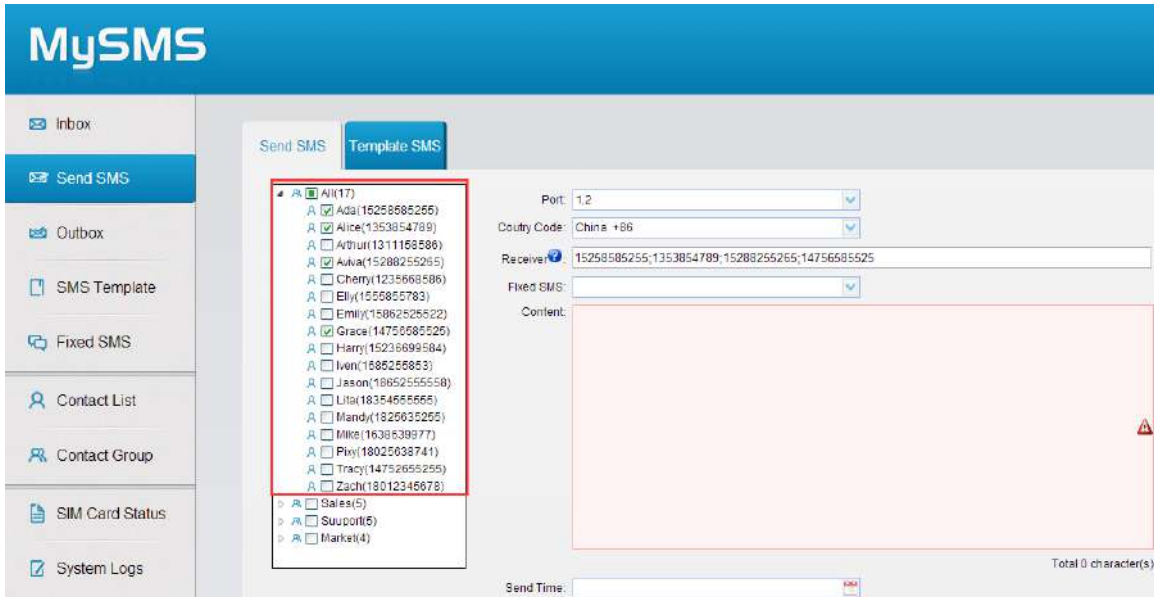
Country Code: China +86

Receiver: 1353854789,1311158586,1586252525,1835455555,14752655255

Fixed SMS:

Figure 4-32 Enter Phone Numbers

You can also pick the mobile numbers from the Contact list.



MySMS

Inbox

Send SMS | Template SMS

Port: 1,2

Country Code: China +86

Receiver: 15258585255,1353854789,15288255255,14756585525

Fixed SMS:

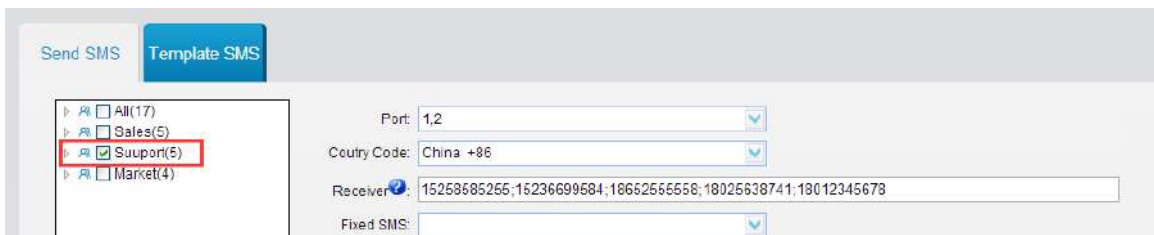
Content:

Send Time:

Total 0 character(s)

Figure 4-33 Select Contacts from Contact List

If you want to send the SMS message to a group, please select the desired group from the left box.



Send SMS | Template SMS

Port: 1,2

Country Code: China +86

Receiver: 15258585255;15236699584;18652555558;18025638741;18012345678

Fixed SMS:

Figure 4-34 Select Contacts from Contact Group

**Step5.** Type the contents in the **Content** Field or select a Fixed SMS message.

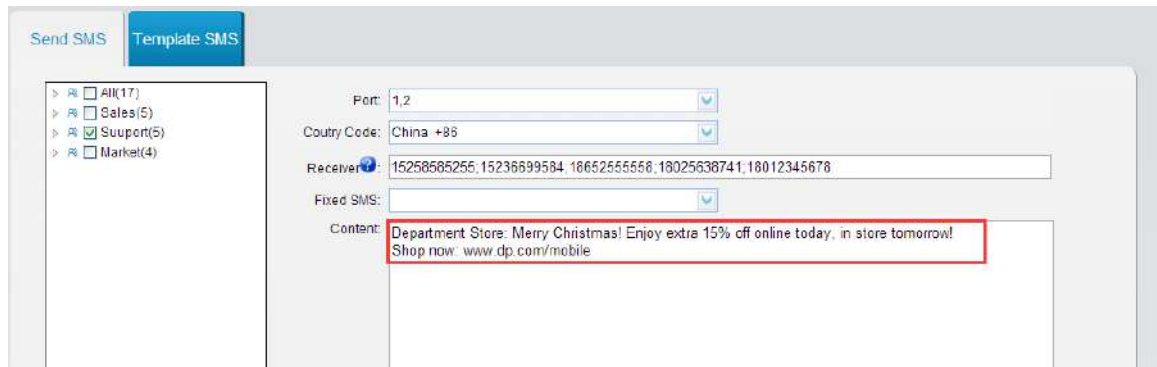


Figure 4-35 Edit Content

**Step6.** Select the date and time for the scheduled message to be delivered. Use the calendar to specify the time and date that you want the message to be sent, and then click **OK**.

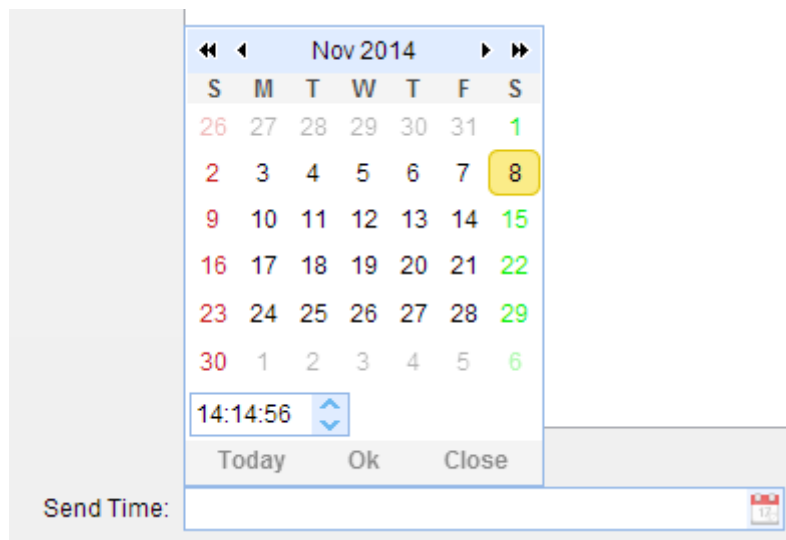


Figure 4-36 Select the Date and Time

**Step7.** Click the **Scheduled** button, the system will prompt you "Scheduled Successfully".

#### 4.4.4 Send Template SMS

MySMS allows you to send personalized SMS messages using the data directly from the Microsoft Excel file. It offers a great amount of ease and convenience. You can send bulk, but personalized SMS messages.

**Step1.** Add an SMS template. Click the **SMS Template** option on the left-hand navigation then click the button **Add Template**.

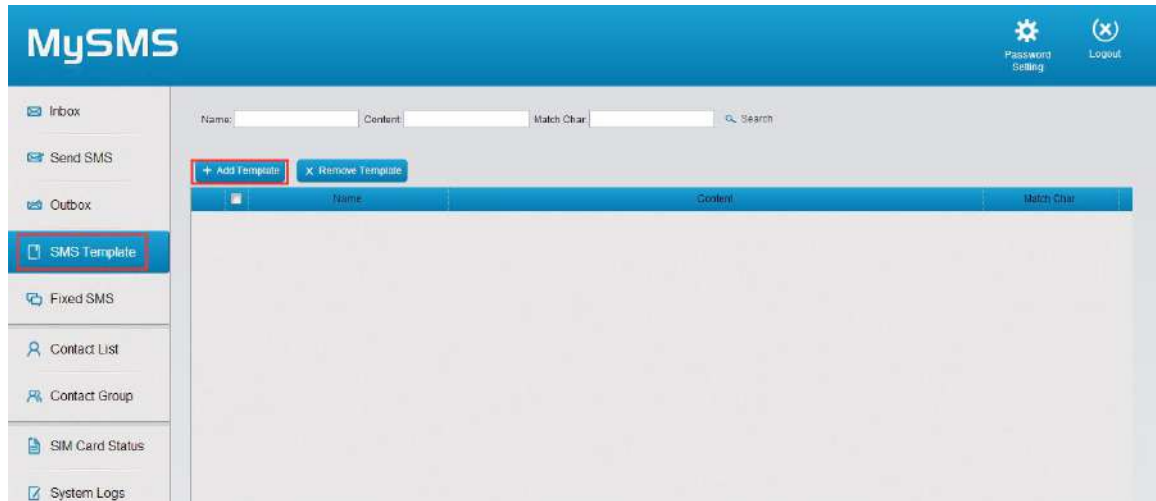


Figure 4-37 Add SMS Template

**Step2.** Fill in the content and match characters.

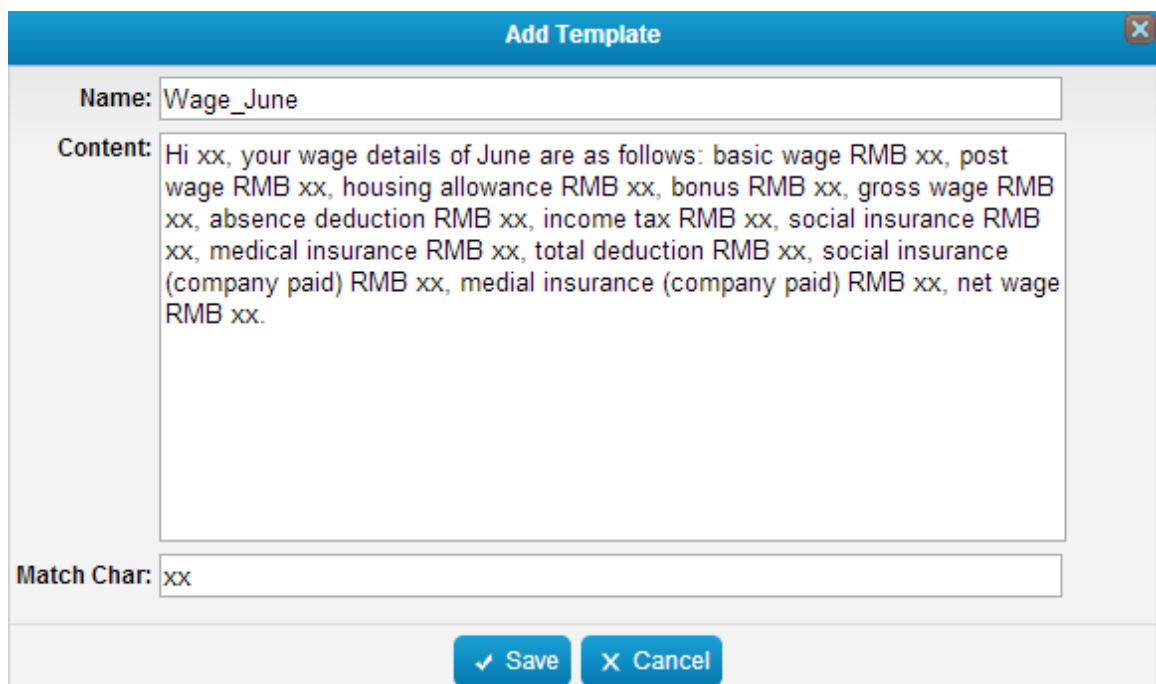


Figure 4-38 Edit SMS Template

**Step3.** Go to **Send SMS** page, and choose **Template SMS**.



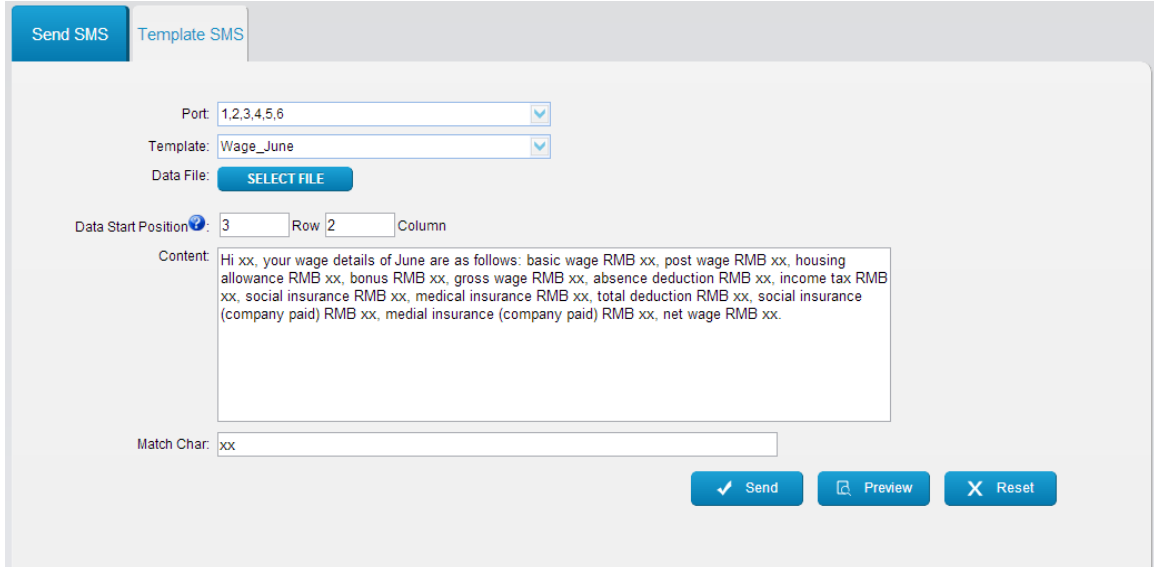


Figure 4-39 Send Template SMS

**Step4.** Select the port and template.

**Step5.** Import the excel data file and define where does the data start.

**Step6.** Fill in the match characters.

*For example, the data in the excel file is showing as below.*

Data starts from Row 3 Column 2, so you should set the **Date Start Position** on MySMS: 3 Row 2 Column.

	A	B	C	D	E	F	G	H	I
1				Gross Wage					
2	No.	Receiver	Name	Basic Wage	Post Wage	Housing Allowance	Bonus	Gross Wage	
3	1	18050089223	Nancy	2000	3900	400	0	6300	
4	2	18050089224	Abby	3000	3900	400	0	7300	
5	3	18050089225	Amanda	2000	3900	400	0	6300	
6	4	18050089226	Zoe	3000	3900	400	0	7300	
7	5	18050089227	John	2000	3900	400	0	6300	
8	6	18050089228	Lucas	3000	3900	400	0	7300	
9	7	18050089229	Jack	2000	3900	400	0	6300	
10	8	18050089230	Linda	3000	3900	400	0	7300	

Figure 4-40 Excel Data

**Step7.** Before sending the SMS messages, you can click **Preview** to check if the messages are correct or not.

Preview		
Id	Receiver	Content
1	18050089223	Hi Nancy, your wage details of June are as follows: basic wage RMB 2000, post wage RMB 3900, ...
2	18050089224	Hi Abby, your wage details of June are as follows: basic wage RMB 3000, post wage RMB 3900, h...
3	18050089225	Hi Amanda, your wage details of June are as follows: basic wage RMB 2000, post wage RMB 390...
4	18050089226	Hi Zoe, your wage details of June are as follows: basic wage RMB 3000, post wage RMB 3900, ho...
5	18050089227	Hi John, your wage details of June are as follows: basic wage RMB 2000, post wage RMB 3900, h...
6	18050089228	Hi Lucas, your wage details of June are as follows: basic wage RMB 3000, post wage RMB 3900, ...
7	18050089229	Hi Jack, your wage details of June are as follows: basic wage RMB 2000, post wage RMB 3900, h...
8	18050089230	Hi Linda, your wage details of June are as follows: basic wage RMB 3000, post wage RMB 3900, ...

50 Page 1 of 1 Displaying 1 to 8 of 8 items

Figure 4-41 Preview Template SMS Messages

**Step8.** After the confirmation, click **Send** to send the message.

## 4.5 Outbox

You can view SMS history and delivery state in the Outbox.

The SMS messages can be searched by "Receiver", "Content", "Port" ,"Time" and "State".

MySMS							
Receiver	Content	Port	Start Date	End Date	State	Search	
25	张三,您好,您六月份工资情况如下:基本工资2000元,岗位工资3900元,生...	3	2014-10-30 21:43:03		Successful		
36	李四,您好,您六月份工资情况如下:基本工资3000元,岗位工资3900元,生...	2	2014-10-30 21:43:01		Successful		
37	张三,您好,您六月份工资情况如下:基本工资2000元,岗位工资3900元,生...	1	2014-10-30 21:42:59		Successful		
38	张三,您好,您六月份工资情况如下:基本工资2000元,岗位工资3900元,生...	13	2014-10-30 21:41:32		Failed		
39	李四,您好,您六月份工资情况如下:基本工资3000元,岗位工资3900元,生...	14	2014-10-30 21:41:26		Failed		
40	张三,您好,您六月份工资情况如下:基本工资2000元,岗位工资3900元,生...	13	2014-10-30 21:41:24		Failed		
41	77777777777777	2	2014-10-30 21:40:11		Successful		
42	1008611	4	2014-10-30 21:36:58		Successful		
43	1008611	3	2014-10-30 21:36:57		Successful		
44	1008611	2	2014-10-30 21:36:55		Successful		
45	1008611	1	2014-10-30 21:36:55		Successful		
46	1111111111111111111111111111111111	2	2014-10-30 21:33:42		Successful		

25 Page 2 of 2 Displaying 25 to 45 of 46 items

Figure 4-42 Outbox

## 4.6 Inbox

You can view all the replies to the message that have been sent in the Inbox.



Figure 4-43 Inbox

Click a specific SMS message, you can reply the message. After typing the contents, click **Reply** button to reply.

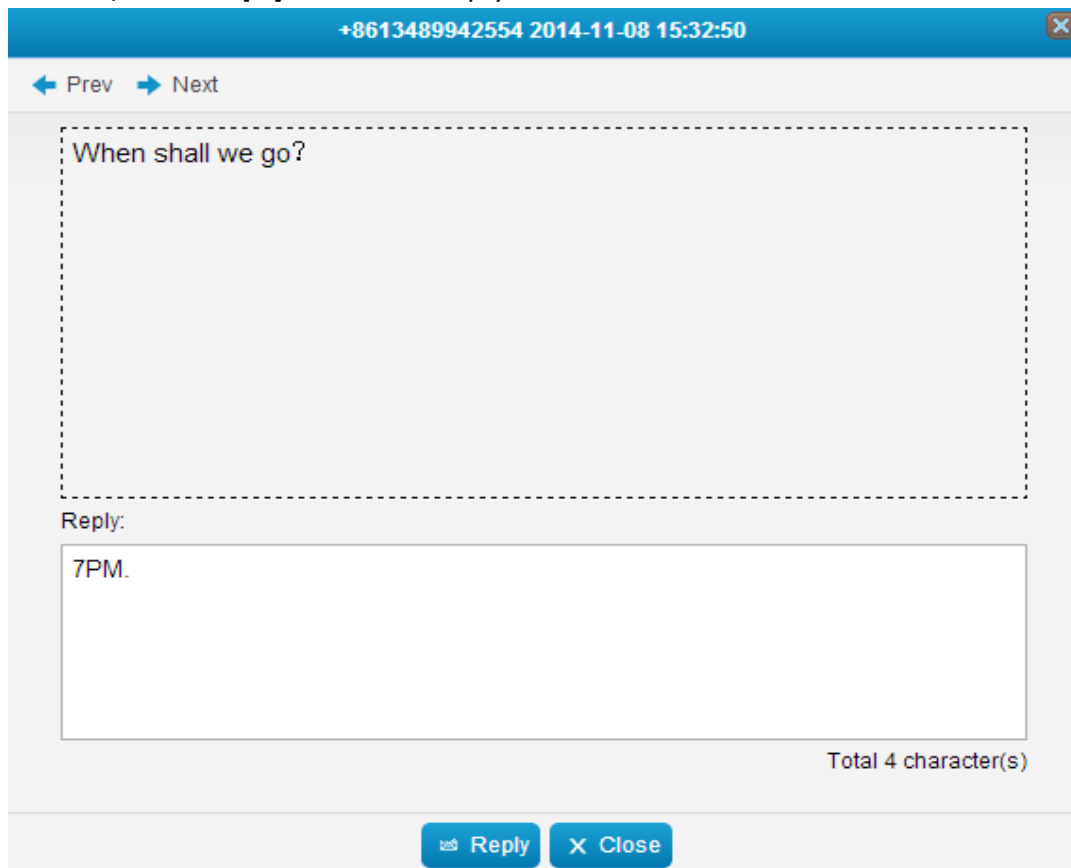


Figure 4-44 Reply a Message

## 4.7 System Logs

The system logs can be viewed and searched by the user on this page.




	Log Type	Time	IP Address	User
1	Send SMS	2014-11-08 15:30:58	192.168.3.99	isf
2	Send SMS	2014-11-08 15:28:05	192.168.3.99	isf
3	Login	2014-11-08 15:26:18	192.168.3.00	isf
4	Send SMS	2014-11-08 13:50:17	192.168.3.99	isf
5	Send SMS	2014-11-08 13:50:12	192.168.3.99	isf
6	Send SMS	2014-11-08 13:50:07	192.168.3.00	isf
7	Send SMS	2014-11-08 13:50:02	192.168.3.99	isf
8	Send SMS	2014-11-08 13:49:56	192.168.3.99	isf
9	Login	2014-11-08 13:30:40	192.168.3.99	isf
10	Login	2014-11-08 13:29:38	192.168.3.29	isf
11	Login	2014-11-08 12:49:04	192.168.3.00	isf
12	Add Group	2014-11-08 11:54:03	192.168.3.99	isf
13	Add Group	2014-11-08 11:53:47	192.168.3.99	isf

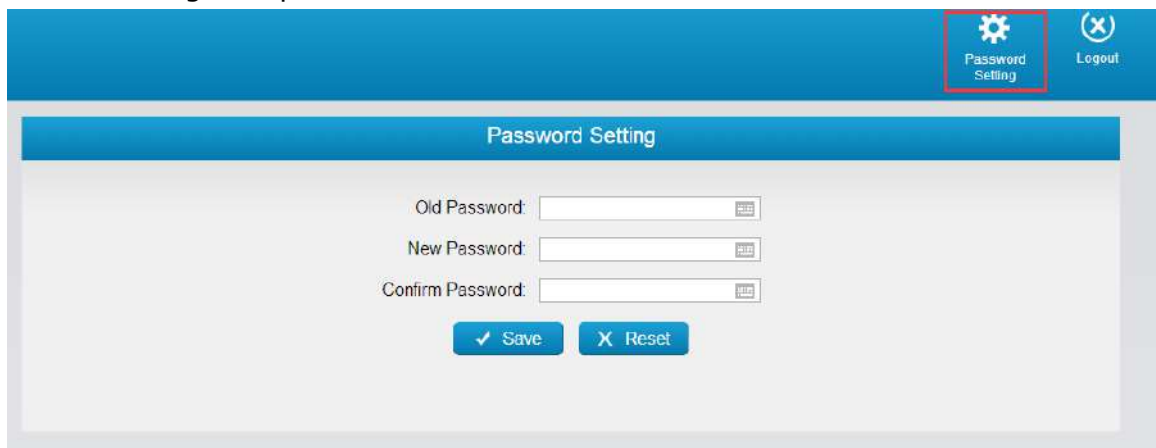
Figure 4-45 System Logs



## 4.8 Password Settings



Click  to change the password of user account.

Enter the old password and set a new password, click **Save**, then log in admin account using new password.



Password Setting

Old Password:

New Password:

Confirm Password:

Figure 4-46 Password Settings

[End]